

River Valley  
Polled Herefords

Presents

# Genetic Designs XVIII



6:30 PM • Friday, September 17, 2021  
At the Farm, Newburgh, ON



***Dear friends and fellow Hereford Breeders,***

Seems like another year has rolled around and sale time is upon us again!

The past year has been a testament to the resilience of farmers.

With fires, flooding, heatwaves, drought and COVID, it seems that not a province in our country has been spared hardships this year. These things are not just happening in Canada, but continue to be world-wide issues. Food security has never been more important, and the public is eager to know that their Canadian farmers are able to supply their needs. We are fortunate to be able to produce two great proteins – beef and eggs, on a family run farm, and to supply our fellow citizens with the same nutritious

products that we ourselves eat every day. Sound, productive livestock will be important in the days and years to come. Now is not the time to back away from the field, now is the time to stay at the forefront of production!

We have always tried to seek out fresh new genetics to help us stay at the forefront. With addition of RIDGE 273H and COWBOSS 113H, we are bringing some younger blood to our bullpen. Their service sells this year.

Once again, thanks to Thurston Livestock for their sale offering and to Ivor for videoing the cattle.

We welcome you during the week prior to the sale, if you wish to view the cattle and then watch and bid at LiveAuctions.tv. Please call the office at 613-378-2701 or our cell phones to let us know you are coming. As always, if we can be of any assistance to you prior to sale day, please contact our office or any of our sale representatives. Videos of the cattle are available through our website.

Either virtually or in person, we hope to see you at the start of the “Hereford Weekend” in Ontario, so please join us on Friday, September 17th, followed by Elm-Lodge on Saturday and the Autumn Alliance sale on Sunday. After the sale, please join us for refreshments and a time to socialize with fellow Hereford enthusiasts.

See you at the farm!

Sincerely,

***Elwyn, Donald and Pauline***

***From the desk at T Bar,***

Welcome to the 17th annual offering of Genetic Designs hosted by the great folks at River Valley. For those who have never visited this multi-faceted agricultural operation, you need to go. A large powerful purebred breeding establishment and a large-scale poultry operation, in addition, to the grain crops they sow, the River Valley gang are busy 24-7. Their dedication to food production makes them all-stars in Canadian Agriculture and through the past two years of unrest, they haven't skipped a beat!

The lineup of breeding stock for 2021 is headlined by a powerful set of two, three and four-year-old females carrying new and exciting services. The Embury's are constantly searching and acquiring new genetics for their program and most of us all know they have been and continue to be outstanding supporters of the Hereford breed. Several herd sire prospects should not be overlooked, and they always select heifer calf opportunities from the top end of their calf crop. What a diverse and exciting set of sale cattle to comb through as you look for the next world champion!

Mother natures wrath, west of Winnipeg, has sent many females to town over the past few months and at a time when we are running short of breeding beef cows. This scenario only adds fuel to the fire and increased inventory will become key in production and herd management. Now is the time to look ahead to adding high quality breeding stock back into the pastures of Canada. The recent pandemic has showed the world the importance of food supply and in a strange way... educated the consumer.

Plan to be with us as we start the Ontario run... whether it be in person, online, text or on the telephone, and add value to your herd with new fresh genetics. We, along with Donald, have selected the offering so feel free to call anyone on our sale team to evaluate and assist you with your selections in a professional and confidential manner.

***Chris Poley***

***Sale Management***

**T Bar C Cattle Co. Ltd.** | Box 2330, Warman, SK S0K 4S0

P: 306-933-4200 | F: 306-934-0744 | info@tbarc.com | www.tbarc.com



**Chris Poley**  
306-220-5006



**Ben Wright**  
519-374-3335



**Shane Michelson**  
403-363-9973



# Genetic Designs XVII Sale

Friday, September 17, 2021 • 6:30 pm  
At the Farm • Newburgh, ON

*Cattle can be viewed during the week prior to the sale.*

## River Valley Polled Herefords

Elwyn, Donald & Pauline Embury  
240 Embury Rd RR 1  
Newburgh, ON K0K 2S0  
Cattle Office: (613) 378-2701  
Main Office: (613) 378-6632  
Fax: (613) 378-1646 Res: (613) 378-2224  
Website: [www.rivervalleyherefords.com](http://www.rivervalleyherefords.com)  
Email: [rivervalleyherefords@kos.net](mailto:rivervalleyherefords@kos.net)

## Genetic Affiliate

Thurston Livestock  
Ivor & Katrina Thurston  
243 Pine Grove Rd RR1  
Lanark, ON K0G 1K0  
Phone: 613-324-4864  
Email: [ivort88@gmail.com](mailto:ivort88@gmail.com)

## Acknowledgments

### Canadian Hereford Association

*Nels Nixdorff* - President

*Rob Flack* - Vice President

*Stephen Scott* - CHA Executive Director

*Jamie O'Shea* - CHA Director

*Rob Flack* - CHA Director

*Karen Paszternak* - OHA President

*Bill & Jill Corp* - OHA Secretary-Manager

### Veterinary Services

*Dr. Ron Herron* - Embryo Transplant Services

*Dr. Paul Tuman* - Nutrition & Herd Health

*Bay of Quinte Vet Cattle Services*

*Thank you for all your help!*

## Check out our Junior's Incentive

Draw on page 43



### Sale Day Telephones

Pauline's Cell 613-530-5726  
Donald's Cell 613-328-9065

### Auctioneer

Chris Poley 306-220-5006

### Sale Representatives

Ben Wright 519-374-3335  
Shane Michelson 403-363-9973  
Chad Wilson 306-577-1256  
Dale Stith 918-760-1550  
Joe Palsson 613-897-3417  
Carl Wright 519-369-7489

### Hereford World

Joe Rickabaugh 785-633-3188

### Directions

**From the West**, take Hwy 401 to Napanee  
Exit on Hwy 41 North (Exit 579)  
Turn right on Goodyear Road  
Goodyear Road runs into County Road 11  
Go straight on County Road 11 to Embury Road  
River Valley is located at 398 Embury Road

**From the East**, take Hwy 401 to Camden East  
Turn left at 4-way stop on Camden East  
Turn right at 3-way stop on Newburgh  
Turn left at Academy Street  
Turn right at Embury Road  
River Valley is located at 398 Embury Road

**From Toronto Airport**, follow 401 East to Exit 579  
1½ to 2 hours driving time

**From Syracuse, NY Airport**, North on Interstate  
81 to the Canadian Border take Highway 401 West



### Online Viewing & Bidding Available

We invite those of you who are unable to attend to be part of the action! We would never want to give someone an excuse not to attend this event, but if the situation arises, we have you covered.

With the help of LiveAuctions.tv, we are now able to give you a live connection to the auction. Real-time bidding will be available via the Internet for this sale. Live audio and live video will allow buyers to bid on animals as if they were present at the sale.

Buyers must create an account at least 2 days prior to the sale. Please visit <http://LiveAuctions.tv> to walk you through the set-up process.

**Please contact Nicki Ross 587-377-1580  
or Brad Fahrmeier 816-392-9241  
if you require any assistance.**



### Accommodations

River Valley has reserved a block of rooms at a special rate at the following hotel:

**Hampton Inn** (14 minutes from Newburgh, ON)

613-354-5554

40 McPherson Drive, Napanee, ON K7R 3L1

\$164.00 per night plus HST - single

Please contact the Cattle Office at 613-378-2701 or [rivervalleyherefords@kos.net](mailto:rivervalleyherefords@kos.net) for assistance with reservations. Credit card required to hold rooms. Must reserve rooms by September 4, 2020.

View the catalogue online at:

[www.rivervalleyherefords.com](http://www.rivervalleyherefords.com) and [www.buyagro.com](http://www.buyagro.com)

# JUSTICE...



**1 RVP 8Y JUSTICE 2J** **MALE**  
 POLLED RVP 2J January 1, 2021 PC03083535

SHF WONDER M326 W18 ET {DLF HYF IEF MDC}  
**NJW 73S W18 HOMEGROWN 8Y ET {DLF HYF IEF MDC}**  
**PC02987563** NJW P606 72N DAYDREAM 73S {DLF HYF IEF}  
 TDP CROSSOVER Z400  
**RVP Z400 EVANGELINE ET 122E {DLF HYF IEF MSUDF}**  
**PC03040846** RVP 36N TOUCH OF GOLD ET 10T {DLF HYF IEF}

KCF BENNETT 3008 M326 {DLF HYF IEF MDF}  
 SHF GOVERNESS 236G L37  
 PW VICTOR BOOMER P606 {MDF}  
 NJW 94J DEW 72N {DLF HYF IEF}  
 TH 133U 719T UPGRADE 69X {DLF HYF IEF}  
 ASH LIL PEANUT 203P {DLF HYF IEF}  
 HF 4L BEYOND 36N  
 HAROLDSON'S CANDACE 122L 27N

**EPDs** CE: -3.0 BW: 4.9 WW: 62.6 YW: 112.5 M: 38.0 TM: 69.3

- Birth weight: 94 lbs.
- He ranks in the top 1% of the breed for milk and total maternal, the top 2% for yearling weight, the top 5% for cow weight and the top 15% for weaning weight
- Justice is a complete package – ultimate body shape, muscle with thickness of top and extremely long sided
- A power herd bull by the NILE Supreme Champion Homegrown. His dam, RVP 122E, is an ET daughter out of the great “Touch of Gold” donor who has 30 registered progeny. Check out his maternal and performance data... it ranks with the best!



**NJW 73S W18 Homegrown 8Y ET - Reference Sire**

## REFERENCE SIRE... **NJW 73S W18 HOMEGROWN 8Y ET {DLF HYF IEF MDC}**

- Ranks in the top 1% of the breed for milk, and total maternal, the top 10% for rib-eye and the top 20% for calving ease and cow weight
- A trait leader for eight trait values
- His feature progeny and service sells



**2** **RVP 131E JET-SETTER 88J** **MALE**  
 POLLED RVP 88J January 31, 2021 PC03083536

BOYD FT KNOX 17Y XZ5 4040  
**RVP 4040 GOLD BULLION 131E {DLF HYF IEF MSUDF}**  
**PC03044657** 5STAR 9001W CAROLINE 505

TH 22R 16S LAMBEAU 17Y  
 DOSS MY EYES ADORE U DHZ5  
 PWF RHF 25L WRANGLER 9001W  
 SSF 503 LADY MASTERPIECE 137

- Birth weight: 92 lbs.
- He ranks in the top 8% of the breed for weaning weight and the top 15% for yearling weight
- Pigmented, short marked and attractive and he knows it!
- A great effort from a Direction two year old who is packed full of fertility and maternal values. Two donors on the mothers side through Star Rose Gardon and the Duchess cow family at Medonte
- This young prospect will add more pounds at weaning and yearling

RVP W18 DIRECTION ET 119D {DLF HYF IEF MSUDF MDC}  
**RVP 119D GRAND DUTCHESS 159G {DLF HYF IEF MSUDF MDC}**  
**PC03058242** BIRD'S-HILL DUTCHIE 3C {DLF HYF IEF MSUDF MDC}

SHF WONDER M326 W18 ET {DLF HYF IEF MDC}  
 STAR ROSE GARDON 13X ET {DLF HYF IEF MSUDF}  
 NUW 73S W18 HOMETOWN 10Y ET {DLF HYF IEF MDC}  
 MHPH MS 533P DUCHESS ET 124W {DLF HYF IEF}

**EPDs** CE: 0.3 BW: 4.5 WW: 65.7 YW: 101.5 M: 23.7 TM: 56.6



**RVP 4040 Gold Bullion 131E - Reference Sire**

# JACKPOT...



- Birth weight: 89 lbs. unassisted
- This Homegrown combines length, muscle shape and thickness all wrapped up in a loose-hided body
- Highly maternal out of a heck of a mother!
- He ranks in the top 1% of the breed for milk and total maternal, the top 15% for rib-eye and the top 18% for yearling weight

**3** **RHF D1 PAGE 8011F**  
 POLLED RHF8011F  
 January 7, 2018 FEMALE PC03056914  
 SCHU-LAR ON TARGET 22S  
 KCF BENNETT ENCORE Z311 ET {DLF HYF IEF}  
**MPH Z311 RAMPAGE D1**  
**PA43696424** RHF 0124 ROSIE 3023A  
 KCF MISS REVOLUTION X338 ET  
 RST TIMES A WASTIN 0124  
 GRANDVIEW CMR MIS P606 X395 ET  
 KCF BENNETT 3008 M326 {DLF HYF IEF MDF}  
 NJW 73S M326 TRUST 100W ET {DLF HYF IEF}  
**RHF 100W DEW 5042C ET**  
**PA43664215** RHF 546 MS TITAN 9060W  
 NJW P606 72N DAYDREAM 73S {DLF HYF IEF}  
 RHF P606 WINDSOR 546R  
 RHF VICTRA 987 543R  
**EPDs CE: -3.0 BW: 2.9 WW: 62.5 YW: 100.5 M: 35.7 TM: 66.5**

**3A** **RVP 8Y JACKPOT 16J**  
 POLLED RVP 16J  
 January 6, 2021 MALE PC03083652  
 SHF WONDER M326 W18 ET {DLF HYF IEF MDC}  
**NJW 73S W18 HOMEGROWN 8Y ET {DLF HYF IEF MDC}**  
**PC02987563** NJW P606 72N DAYDREAM 73S {DLF HYF IEF}  
 SHF GOVERNESS 236G L37  
 PW VICTOR BOOMER P606 {MDF}  
 NJW 94J DEW 72N {DLF HYF IEF}  
 KCF BENNETT ENCORE Z311 ET {DLF HYF IEF}  
 RHF 0124 ROSIE 3023A  
 NJW 73S M326 TRUST 100W ET {DLF HYF IEF}  
 RHF 546 MS TITAN 9060W  
**RHF D1 PAGE 8011F**  
**PC03056914** RHF 100W DEW 5042C ET  
**EPDs CE: 0.4 BW: 2.8 WW: 59.5 YW: 98.4 M: 41.4 TM: 71.2**



- She ranks in the top 2% of the breed for total maternal, the top 3% for milk, the top 12% for marbling, the top 15% for weaning and yearling weight and the top 20% for rib-eye
- A tank of a cow with a beautiful udder and a great set of numbers
- She is the type of cow that we would like all our herd bulls out of!
- AI bred to NJW 11B 6589 Authority 57G ET on April 23, 2021, then exposed to RVPH 79Z 33B Whit 83H ET from May 30 to June 24, 2021. Pregnancy examined safe to the AI service



LOT  
4A

- Birth weight: 74 lbs. unassisted
- Ranks in the top 8% of the breed for birth weight and the top 10% for calving ease
- Short marked, pigmented and check out his mother's udder
- A powerful genetic herd changer ideal for the heifer pasture

**4** **CHULA-VISTA GLENDA 205G {DLF HYF IEF MSUDF}** FEMALE  
 POLLED CJVK 205G February 5, 2019 PC03059811  
 CHURCHILL SENSATION 028X {DLF HYF IEF}  
 CHURCHILL RED BULL 200Z {DLF HYF IEF MDF} CHURCHILL LADY 002X ET  
**HAROLDSON'S TOTEM 200Z 5D {DLF HYF IEF MSUDF}** SHF RIB EYE M326 R117 {DLF HYF IEF}  
**PC03023245** BLAIR'S NELLIE R117 ET 5B {DLF HYF IEF} NCX MISS JR NELLIE 528N  
 WLB SHAPLEY 50S 40U  
 MHPH 40U INSPECTOR 120X {DLF HYF IEF} MHPH MS 29F NITA 112L {DLF HYF IEF}  
**HAROLDSONS ANL SARAH 120X 92Z** REMITALL ONLINE 122L  
**PC02970341** HAROLDSON'S SARAH 122L 22R HAROLDSON'S SARAH 2Z 29D  
**EPDs** CE: 6.4 BW: 2.3 WW: 42.7 YW: 78.9 M: 21.7 TM: 43.1

**4A** **RVP 46A JUNCTION 83J** MALE  
 POLLED RVP 83J January 29, 2021 PC03083666  
 BOYD WORLDWIDE 9050 ET {DLF HYF IEF MDF} SHF RIB EYE M326 R117 {DLF HYF IEF}  
**RVP 9050 ARCHITECT 46A {DLF HYF IEF}** MSU TCF RACHAEL 22S ET  
**PC02981745** RVP RCV 100W YE HAW 130Y {DLF HYF IEF} NJW 73S M326 TRUST 100W ET {DLF HYF IEF}  
 RVP 36N TOUCH OF GOLD ET 10T {DLF HYF IEF}  
 CHURCHILL RED BULL 200Z {DLF HYF IEF MDF}  
 HAROLDSON'S TOTEM 200Z 5D {DLF HYF IEF MSUDF} BLAIR'S NELLIE R117 ET 5B {DLF HYF IEF}  
**CHULA-VISTA GLENDA 205G {DLF HYF IEF MSUDF}** MHPH 40U INSPECTOR 120X {DLF HYF IEF}  
**PC03059811** HAROLDSONS ANL SARAH 120X 92Z HAROLDSON'S SARAH 122L 22R  
**EPDs** CE: 8.8 BW: 0.2 WW: 50.6 YW: 80.9 M: 25.8 TM: 51.1



LOT  
4

- She ranks in the top 8% of the breed for fat and the top 20% for calving ease
- A maternal sister, Ella 216E, is working in the herd of Bruce and Heather Ribey, Paisley, Ontario
- This two year old first calver combines a majority of the great cows in the breed-Nita, Catalina, Sarah, Nellie and Churchill Lady
- AI bred to NJW 73S M326 Trust 100W ET on April 6, 2021, then exposed to RVPH 79Z 33B Whit 83H ET from May 30 to June 24, 2021. Pregnancy examined safe to the AI service

# JACKPOT...



- Birth weight: 92 lbs. unassisted
- Ranks in the top 2% of the breed for fat, the top 8% for milk and total maternal, the top 10% for rib-eye, the top 18% for yearling weight and cow weight and the top 20% for weaning weight
- Phenotypically complete, short marked and has great carcass values
- We all know the influence Trust has put into the breed — you can't go wrong walking a Trust son!

**5** **JLCS 38W JAZZY 463 E24**  
 POLLED E24 February 15, 2017 **FEMALE**  
 PC03043712

SHF PROGRESS P20  
**NJW 76S P20 BEEF 38W ET**  
**PA43002917** NJW 55N STARDUST 76S

TH 122 711 VICTOR 719T {DLF HYF IEF MDF}  
**G JAZZY 719T 463**  
**PA43565790** G MISS INTIME 247

FELTONS LEGEND 242  
 SHF INTRSTATE D03 G06 ET  
 NJW BW TRAILDUST 161L {MDF}  
 NJW 57G SPIRIT QUEEN 55N ET

DRF JWR PRINCE VICTOR 711  
 KBCR 19D DOMINETTE 122 {DLF IEF}  
 BECKLEYS 934S ONTIME 816U  
 G MISS SUP 508

**EPDs** CE: -0.2 BW: 2.8 WW: 54.1 YW: 82.8 M: 31.4 TM: 58.5

**5A** **RVP 100W JACKPOT 37J**  
 POLLED RVP 37J January 14, 2021 **MALE**  
 PC03083665

KCF BENNETT 3008 M326 {DLF HYF IEF MDF}  
**NJW 73S M326 TRUST 100W ET {DLF HYF IEF}**  
**PC02938213** NJW P606 72N DAYDREAM 73S {DLF HYF IEF}

NJW 76S P20 BEEF 38W ET  
**JLCS 38W JAZZY 463 E24**  
**PC03043712** G JAZZY 719T 463

RRH MR FELT 3008  
 KCF MISS 459 F284  
 PW VICTOR BOOMER P606 {MDF}  
 NJW 94J DEW 72N {DLF HYF IEF}

SHF PROGRESS P20  
 NJW 55N STARDUST 76S  
 TH 122 711 VICTOR 719T {DLF HYF IEF MDF}  
 G MISS INTIME 247

**EPDs** CE: 0.3 BW: 3.2 WW: 60.0 YW: 98.6 M: 33.2 TM: 63.2



- She ranks in the top 12% of the breed for milk, the top 16% for fat and the top 20% for total maternal
- Most definitely the highest volume female in the offering — highly productive
- Her Trust daughter, RVP 100W Hands Up 93H, sells as Lot 51
- Her sire, NJW 76S P20 Beef 38W ET ranks in the top 1% for milk along with strong carcass values
- AI bred to NJW 11B 6589 Authority 57G ET on March 23, 2021, then exposed to RVPH 79Z 33B Whit 83H ET from May 30 to June 24, 2021. Pregnancy examined safe to the AI service



- Birth weight: 89 lbs. unassisted
- He ranks in the top 5% of the breed for milk and rib-eye, the top 8% for total maternal and the top 20% for cow weight
- Straight-lined with awesome feet and legs, this Homegrown prospect is complete from all angles
- Dark cherry red – this youngster appears to have a competitive look, let alone his contributions to your breeding goals



**6 RVP 4R DAISY-MAE 35D**  
POLLED RVP 35D

January 20, 2016  
**FEMALE**  
 PC03017824  
 FELTONS DOMINO 774  
 FELTONS G15  
 REMITALL ONLINE 122L  
 HH MISS ADV 786G 1ET  
 KCF BENNETT 3008 M326 {DLF HYF IEF MDF}  
 NJW P606 72N DAYDREAM 73S {DLF HYF IEF}  
 STAR SJS WALK THIS WAY 179W {DLF HYF IEF}  
 RVP 45S ULTRASONIC 21U

FELTONS LEGEND 242  
**MSU TCF REVOLUTION 4R {DLF HYF IEF}**  
**PC02937496** MSU TCF RACHAEL ET 54N {DLF HYF IEF}  
 NJW 73S M326 TRUST 100W ET {DLF HYF IEF}  
**BLAIR-ATHOL 100W YAHOO 4B**  
**PC02997121** RVP 179W YIPPY KI YI YEA 111Y

**EPDs** CE: 4.8 BW: 2.4 WW: 57.6 YW: 93.7 M: 24.6 TM: 53.4

**6A RVP 8Y JAX 38J**  
POLLED RVP 38J

January 15, 2021  
**MALE**  
 PC03083653  
 SHF WONDER M326 W18 ET {DLF HYF IEF MDC}  
 SHF GOVERNESS 236G L37  
**NJW 73S W18 HOMEGROWN 8Y ET {DLF HYF IEF MDC}**  
**PC02987563** NJW P606 72N DAYDREAM 73S {DLF HYF IEF}  
 NJW 94J DEW 72N {DLF HYF IEF}  
 FELTONS LEGEND 242  
 MSU TCF RACHAEL ET 54N {DLF HYF IEF}  
 NJW 73S M326 TRUST 100W ET {DLF HYF IEF}  
 RVP 179W YIPPY KI YI YEA 111Y  
 MSU TCF REVOLUTION 4R {DLF HYF IEF}  
**RVP 4R DAISY-MAE 35D**  
**PC03017824** BLAIR-ATHOL 100W YAHOO 4B

**EPDs** CE: 4.9 BW: 2.4 WW: 56.8 YW: 94.6 M: 35.9 TM: 64.3

- She ranks in the top 1% of the breed for rib-eye, the top 9% for maternal calving ease and the top 20% for cow weight
- High volume female with a pretty udder – her bull calf at foot proves her productive value
- Her mother, Blair-Athol 100W Yahoo 4B is working in the herd of Ricky Bushey, Danville, Quebec
- Paternal sister to RVP 4R Deluxe Edition 23D, selling as Lot 7
- AI bred to NJW 76S 27A Long Range 203D ET on March 25, 2021, then exposed to RVPH 79Z 33B Whit 83H ET from May 30 to June 24, 2021. Pregnancy examined safe to the AI service



# JUSTIFY...



- She ranks in the top 12% of the breed for calving ease, the top 15% for maternal calving ease and the top 20% for rib-eye
- Her daughter by Boyd Ft Knox, was selected by Benjamin Kellington, Long Lane Cattle Ranch, Newmarket, Ontario in 2019
- Her homo polled sire, Revolution, is one of the most heavily used sires in the breed offering performance with a very large rib-eye
- AI bred to NJW 73S M326 Trust 100W ET on May 8, 2021. Pasture exposed to RVPH 79Z 33B Whit 83H ET from May 30 to June 24, 2021. Pregnancy examined safe to AI.

**7 RVP 4R DELUXE EDITION 23D**  
 POLLED RVP 23D January 14, 2016 FEMALE PC03017822

FELTONS LEGEND 242  
**MSU TCF REVOLUTION 4R {DLF HYF IEF}**  
**PC02937496** MSU TCF RACHAEL ET 54N {DLF HYF IEF}

TH 22R 16S LAMBEAU 17Y  
**BOYD 867 KEEPSAKE 4003**  
**PC03017483** SSF BBC 669 KEEPSAKE 867

FELTONS DOMINO 774  
 FELTONS G15  
 REMITALL ONLINE 122L  
 HH MISS ADV 786G 1ET  
 TH 121L 63N TUNDRA 16S  
 TH 62N 3L KELSEY 22R  
 SSF JJD SHREK 669  
 BOYD 944Y KEEPSAKE 36J

**EPDs CE: 7.8 BW: 1.7 WW: 56.5 YW: 84.6 M: 19.3 TM: 47.6**

**7A RVP 8Y JUSTIFY 6J**  
 POLLED RVP 6J January 3, 2021 MALE PC03083651

SHF WONDER M326 W18 ET {DLF HYF IEF MDC}  
**NJW 73S W18 HOMEGROWN 8Y ET {DLF HYF IEF MDC}**  
**PC02987563** NJW P606 72N DAYDREAM 73S {DLF HYF IEF}

MSU TCF REVOLUTION 4R {DLF HYF IEF}  
**RVP 4R DELUXE EDITION 23D**  
**PC03017822** BOYD 867 KEEPSAKE 4003

KCF BENNETT 3008 M326 {DLF HYF IEF MDF}  
 SHF GOVERNESS 236G 137  
 PW VICTOR BOOMER P606 {MDF}  
 NJW 94J DEW 72N {DLF HYF IEF}  
 FELTONS LEGEND 242  
 MSU TCF RACHAEL ET 54N {DLF HYF IEF}  
 TH 22R 16S LAMBEAU 17Y  
 SSF BBC 669 KEEPSAKE 867

**EPDs CE: 4.8 BW: 3.1 WW: 58.8 YW: 94.3 M: 33.2 TM: 62.6**

- Birth weight: 93 lbs. unassisted
- He ranks in the top 8% for milk, the top 9% for total maternal and the top 15% for rib-eye
- This son of Homegrown will add pounds to your bull calves and you will want to keep every daughter



*Online Viewing & Bidding Available*

Please contact Nicki Ross 587-377-1580

or Brad Fahrmeier 816-392-9241

if you require any assistance.

*View the catalogue online at:*

**www.rivervalleyherefords.com and www.buyagro.com**



**8**

**RVP 100W JUBILANT 23J**

POLLED RVP 23J

January 9, 2021

**FEMALE**

PC03080929

**NJW 73S M326 TRUST 100W ET {DLF HYF IEF}**  
**PC02938213**

KCF BENNETT 3008 M326 {DLF HYF IEF MDF}  
 NJW P606 72N DAYDREAM 73S {DLF HYF IEF}

RRH MR FELT 3008  
 KCF MISS 459 F284  
 PW VICTOR BOOMER P606 {MDF}  
 NJW 94J DEW 72N {DLF HYF IEF}

**E 203Z FAITH D55**  
**PC03043252**

HARVIE DAN SNIPER 203Z {MSUDF}  
 ET719 LADY BRAXTON A036

TH 122 711 VICTOR 719T {DLF HYF IEF MDF}  
 HARVIE DAN MS FIREFLY 69S {DLF HYF IEF}  
 E BRAXTON 719 {DLF IEF}  
 E 196T SANDI Y342

**EPDs** CE: 6.8 BW: 2.0 WW: 59.3 YW: 97.3 M: 33.8 TM: 63.5

- Birth weight: 82 lbs.
- She ranks in the top 8% of the breed for milk and total maternal, the top 10% for rib-eye and carcass weight, the top 18% for calving ease and the top 20% for weaning weight
- A dual purpose female – show barn and front pasture
- Dark red, highly pigmented, deep bodied yet angular and stylish
- Heifers of this quality are hard to find and even harder to see go. Since we have her full sister, we decided to offer her

**REFERENCE SIRE...**

**NJW 73S M326 TRUST 100W ET {DLF HYF IEF}**

- Ranks in the top of the breed as a trait leader of twelve breeding values
- US National Champion out of a prolific herd sire producing female "Daydream 73S"
- His daughters headline the sale



**NJW 73S M326 Trust 100W ET - Reference Sire**

**SELLING CHOICE - LOTS 9A & 9B**



- Birth weight: 81 lbs.
- She ranks in the top 15% of the breed for calving ease and birth weight
- Her mother Caterina 43C is a natural daughter of the donor female MRF Rachael
- This young lady combines calving ease with style
- Here's a great opportunity for juniors of all ages to get a value added show prospect

**9A RVP 4040 JULEP 1J**  
POLLED RVP 1J

January 1, 2021 **FEMALE**  
PC03080925

TH 22R 16S LAMBEAU 17Y  
**BOYD FT KNOX 17Y XZ5 4040**  
PC03045770 DOSS MY EYES ADORE U DHZ5

TH 121L 63N TUNDRA 16S  
TH 62N 3L KELSEY 22R  
BOYD WORLDWIDE 9050 ET {DLF HYF IEF MDF}  
DHF COVER GIRL C902  
SHF RIB EYE M326 R117 {DLF HYF IEF}  
SSF P606 MS VICTOR 803  
MSU TCF REVOLUTION 4R {DLF HYF IEF}  
MRF MISS DURANGO X60

BOYD MASTERPIECE 0220  
**RVP 0220 CATERINA 43C**  
PC03006416 MRF RACHAEL 4R Z97 {DLF HYF IEF MSUDF}

**EPDs** CE: 7.6 BW: 1.1 WW: 52.2 YW: 80.4 M: 20.5 TM: 46.6

**9B RVP 81E JADE 25J**  
POLLED RVP 25J

January 9, 2021 **FEMALE**  
PC03080931

CHURCHILL SENSATION 028X {DLF HYF IEF}  
**NJW 160B 028X HISTORIC 81E ET {MDF}**  
PC03072832 NJW 73S 38W DAYDREAM 160B

NJW 79Z 22Z HEAVY DUTY 72C ET {MDF}  
**KH JLCS 72C DURANNA C38 617**  
PC03043252 JLCS 4R DURANNA 9438 C38 ET

UPS DOMINO 3027 {DLF HYF IEF}  
CHURCHILL LADY 7202T ET {DLF HYF IEF}  
NJW 76S P20 BEEF 38W ET  
NJW P606 72N DAYDREAM 73S {DLF HYF IEF}  
NJW 67U 28M BIG MAX 22Z {HYF}  
BW 91H 100W RITA 79Z ET  
MSU TCF REVOLUTION 4R {DLF HYF IEF}  
THM 4037 DURANNA 9438

**EPDs** CE: 7.1 BW: 0.3 WW: 56.7 YW: 87.1 M: 36.3 TM: 64.7



- Birth weight: 65 lbs.
- She ranks in the top 3% of the breed for milk and rib-eye, the top 5% total maternal, the top 8% birth weight and the top 15% for calving ease and maternal calving ease
- Her sire, Historic, is top of the breed for milk, birth weight, total maternal and rib-eye
- For those looking for a classy prospect that is loaded with maternal values, don't overlook this Historic daughter — the choice of these two females will be interesting!

SELLING CHOICE - LOTS 10 & 10A

- She ranks in the top 1% of the breed for fat, the top 8% for rib-eye and the top 18% for carcass weight
- An own daughter of Remitall-West Yellow Rose 2Y the prolific donor dam for Remitall-West and JK Fraser Cattle, Cochrane, Alberta. Yellow Rose is the mother of many herd sires in purebred operations which include, C & T Polled Herefords, Redline Livestock, Wascana Cattle Co., Key Farms, Beaver Tail Polled Herefords and McIver Happy Acres in Minnesota. What a great opportunity to add this front pasture unit to your program!
- We all wish our two-year-olds looked like her
- AI bred to NJW 73SM326 Trust 100W ET on March 25, 2021, then exposed to NJW 79Z 199B Cowboss 113H ET from May 29 to August 31, 2021 Pregnancy examined safe to the AI service



LOT 10

**10** **REMITALL-W GD ROSE ET 66G {DLF HYF IEF MSUDF}** FEMALE  
 POLLED REM 66G February 11, 2019 PC03061696

YALGOO BOULDER Z250  
**REMITALL-W GD WATERLOO ET 12B {DLF HYF IEF}**  
**PC02997206** MERAWAH SHAMROCK C130

SHF RIB EYE M326 R117 {DLF HYF IEF}  
**REMITALL-WEST YELLOW ROSE 2Y {DLF HYF IEF}**  
**PC02954478** DORBAY MISS WHITNEY 411W {DLF HYF IEF}

BOWEN UNIQUE U161  
 YALGOO BETTE T185  
 MERAWAH NORTH WEST A12 (ET)  
 MERAWAH SHAMROCK Y108  
 KCF BENNETT 3008 M326 {DLF HYF IEF MDF}  
 HVH MISS HUDSON 83K 8M  
 REMITALL ROUTE 66 ET 346R  
 DOR VIEW HAWKS GAL 19R

**EPDs** CE: 1.3 BW: 2.2 WW: 53.8 YW: 90.9 M: 19.6 TM: 46.5

**10A** **RVP 81E ROSE JEWEL 24J** FEMALE  
 POLLED RVP 24J January 9, 2021 PC03080930

CHURCHILL SENSATION 028X {DLF HYF IEF}  
**NJW 160B 028X HISTORIC 81E ET {MDF}**  
**PC03072832** NJW 73S 38W DAYDREAM 160B

REMITALL-W GD WATERLOO ET 12B {DLF HYF IEF}  
**REMITALL-W GD ROSE ET 66G {DLF HYF IEF MSUDF}**  
**PC03061696** REMITALL-WEST YELLOW ROSE 2Y {DLF HYF IEF}

UPS DOMINO 3027 {DLF HYF IEF}  
 CHURCHILL LADY 7202T ET {DLF HYF IEF}  
 NJW 76S P20 BEEF 38W ET  
 NJW P606 72N DAYDREAM 73S {DLF HYF IEF}  
 YALGOO BOULDER Z250  
 MERAWAH SHAMROCK C130  
 SHF RIB EYE M326 R117 {DLF HYF IEF}  
 DORBAY MISS WHITNEY 411W {DLF HYF IEF}

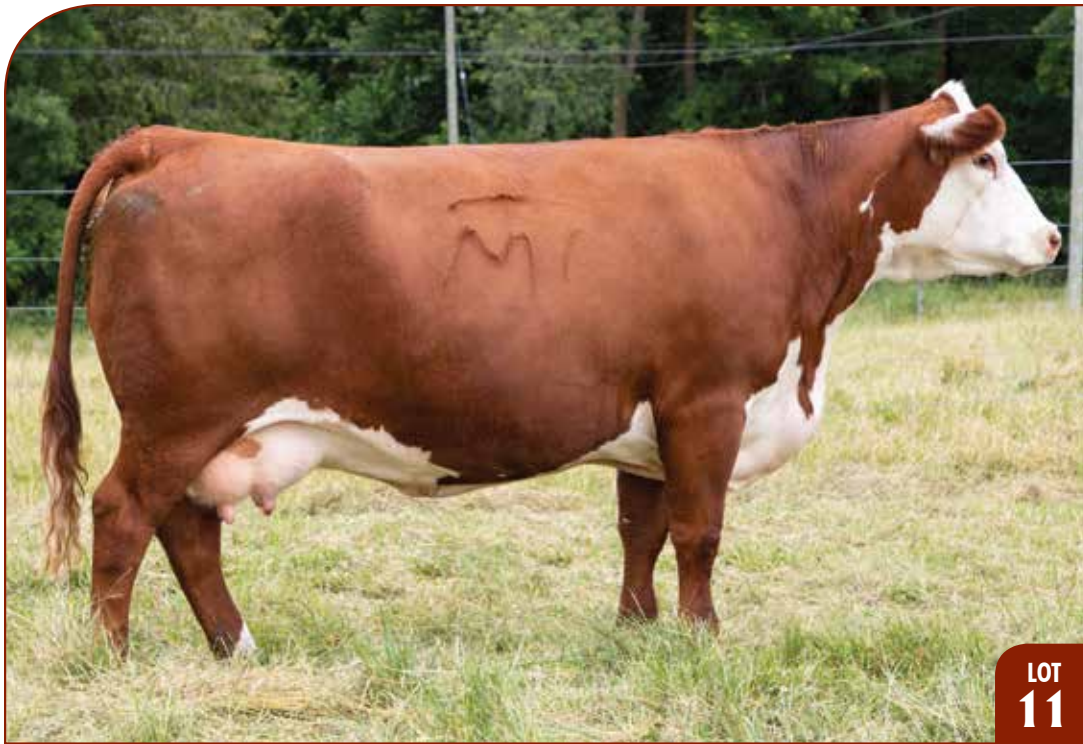
**EPDs** CE: 7.5 BW: -0.8 WW: 48.3 YW: 77.7 M: 29.5 TM: 53.7

- Birth weight: 61 lbs. unassisted
- She ranks in the top 2% of the breed for rib-eye, the top 5% for birth weight, the top 8% for maternal calving ease and the top 12% for calving ease
- This young lady combines volume with sharpness and performance
- Mating 66G to Historic has developed quite a powerful genetic package combining calving ease factor and high carcass values into a competitive female destined to excel
- Whether you by the mother or the daughter, both are the front pasture kind



LOT 10A

# TUFF LADY & JALAPENO...



- She ranks in the top 2% of the breed for weaning weight, the top 15% for yearling weight and the top 20% for total maternal and carcass weight
- Long sided, deep bodied and high in performance values
- Her Trust daughter is in our yearling pasture
- **AI bred to NJW 76S 27A Long Range 203D ET on April 6, 2021, then exposed to NJW 79Z 199B Cowboss 113H ET from May 29, to August 31, 2021. Pregnancy examined safe to the AI service**

**11 MC 1559 4025 TUFF LADY 1713**  
 POLLED 1723 January 23, 2017 FEMALE PC03043241  
 KT BUILT TUFF 1010  
**KT TUFF LOVE 4025**  
**PA43499383** KT MS 0124 TIMES A WASTIN 2086  
 MC 3043 6056 SOLUTION 1390 ET  
**MC 1328 1390 KELLY 1559**  
**PC03043236** MC 1168 G151 VICKY 1328  
**EPDs CE: 0.0 BW: 3.3 WW: 68.8 YW: 98.4 M: 24.5 TM: 58.9**

NJW 98S DURANGO 44U {DLF HYF IEF}  
 KT MS R117 RIB EYE 9177  
 RST TIME'S A WASTIN' 0124 {DLF HYF IEF}  
 KT MS K085 PROSPECTOR 4016  
 THM SOLUTION 6056  
 THM KELLY 29F 3043  
 DESTIN EXCLUSIVE 77U G151 ET  
 MC W997 GLORIA 1168

**11A RVP 8Y JALAPENO 40J {MDF}**  
 POLLED RVP 40J January 15, 2021 FEMALE PC03083655  
 SHF WONDER M326 W18 ET {DLF HYF IEF MDC}  
**NJW 73S W18 HOMEGROWN 8Y ET {DLF HYF IEF MDC}**  
**PC02987563** NJW P606 72N DAYDREAM 73S {DLF HYF IEF}  
 KT TUFF LOVE 4025  
**MC 1559 4025 TUFF LADY 1713**  
**PC03043241** MC 1328 1390 KELLY 1559  
**EPDs CE: 1.7 BW: 2.4 WW: 61.4 YW: 95.1 M: 35.9 TM: 66.6**

KCF BENNETT 3008 M326 {DLF HYF IEF MDF}  
 SHF GOVERNESS 236G L37  
 PW VICTOR BOOMER P606 {MDF}  
 NJW 94J DEW 72N {DLF HYF IEF}  
 KT BUILT TUFF 101  
 KT MS 0124 TIMES A WASTIN 2086  
 MC 3043 6056 SOLUTION 1390 ET  
 MC 1168 G151 VICKY 1328



- Birth weight: 69 lbs. unassisted
- She ranks in the top 4% of the breed for milk and total maternal and the top 18% for weaning weight
- A fancy daughter of Homegrown with high maternal values in a interesting package

- She ranks in the top 1% of the breed for calving ease and the top 2% for birth weight
- Her mother, Boyd 867 Keepsake 4003, sells as Lot 45
- A maternal sister to 54G by Crossover, was selected by Blair-Atthol Polled Herefords, Arcola, Saskatchewan. Her maternal sister by Revolution with her herd sire prospect at side sells as Lot 7
- Pasture exposed to NJW 79Z 199B Cowboss 113H ET from May 29, to August 31, 2021



**12 RVP 4040 GIFT 54G**  
POLLED RVP 54G

TH 22R 16S LAMBEAU 17Y  
**BOYD FT KNOX 17Y XZ5 4040**  
PC03045770 DOSS MY EYES ADORE U DHZ5

TH 22R 16S LAMBEAU 17Y  
**BOYD 867 KEEPSAKE 4003**  
PC03017483 SSF BBC 669 KEEPSAKE 867

**EPDs CE: 13.1 BW: -1.2 WW: 43.5 YW: 65.0 M: 19.0 TM: 40.8**

January 15, 2019 **FEMALE**  
PC03058014

TH 121L 63N TUNDRA 16S  
TH 62N 3L KELSEY 22R  
BOYD WORLDWIDE 9050 ET {DLF HYF IEF MDF}  
DHF COVER GIRL C902

TH 121L 63N TUNDRA 16S  
TH 62N 3L KELSEY 22R  
SSF JJD SHREK 669  
BOYD 944Y KEEPSAKE 36J

**12A RVP 46A JEWEL 63J**  
POLLED RVP 63J

BOYD WORLDWIDE 9050 ET {DLF HYF IEF MDF}  
**RVP 9050 ARCHITECT 46A {DLF HYF IEF}**  
PC02981745 RVP RY 100W YE HAW 130Y {DLF HYF IEF}

BOYD FT KNOX 17Y XZ5 4040  
**RVP 4040 GIFT 54G**  
PC03058014 BOYD 867 KEEPSAKE 4003

**EPDs CE: 12.4 BW: -1.9 WW: 50.0 YW: 72.2 M: 24.6 TM: 49.6**

January 23, 2021 **FEMALE**  
PC03080981

SHF RIB EYE M326 R117 {DLF HYF IEF}  
MSU TCF RACHAEL 22S ET  
NW 73S M326 TRUST 100W ET {DLF HYF IEF}  
RVP 36N TOUCH OF GOLD ET 10T {DLF HYF IEF}

TH 22R 16S LAMBEAU 17Y  
DOSS MY EYES ADORE U DHZ5  
TH 22R 16S LAMBEAU 17Y  
SSF BBC 669 KEEPSAKE 867

- Birth weight: 63 lbs. unassisted
- She ranks in the top 1% of the breed for birth weight, the top 2% for calving ease and the top 18% for marbling
- Moderate in frame size and attractive from all angles
- I can't say enough about these Architect daughters in production. Don't miss the opportunity to own one!
- For those who like their rest during calving season, don't miss this calving ease family



# FELICITY & JANGLE...



- She ranks in the top 8% of the breed for yearling weight and the top 10% for cow weight
- A maternal sister by Boyd Masterpiece was selected by Katelyn Taylor and a maternal brother, RVP Dividend is herd bull for Meridian Herefords, Hodgson, Manitoba
- AI bred to NJW 11B 6589 Authority 57G ET on May 6, 2021, then exposed to NJW 79Z 199B Cowboss 113H ET from May 29, to August 31, 2021. Pregnancy examined safe to the AI service

**13 RVP Z400 FELICITY 108F**  
 POLLED RVP 108F February 16, 2018 FEMALE PC03046604

TH 133U 719T UPGRADE 69X {DLF HYF IEF}  
 TDP CROSSOVER Z400 TH 122 711 VICTOR 719T {DLF HYF IEF MDF}  
 PC02979607 ASH LIL PEANUT 203P {DLF HYF IEF} TH 14S 103R MEGAN 133U  
 MOHICAN MINT 19M  
 ASH MELODY 211M

TH 71U 719T MR HEREFORD 11X {DLF HYF IEF}  
 MA 11X TAMMY 41Y 19A TH 122 711 VICTOR 719T {DLF HYF IEF MDF}  
 PC02982114 MA 83T TAMMY 30P ET 41Y {DLF HYF IEF} TH 7N 45P RITA 71U {DLF HYF IEF}  
 MEADOW-ACRES 17J TAMMY 13K 30P WLB ELI 10H 83T {DLF HYF IEF}

**EPDs CE: 5.6 BW: 2.9 WW: 58.4 YW: 104.3 M: 27.4 TM: 56.6**

**13A RVP 100W JANGLE 89J**  
 POLLED RVP 89J January 31, 2021 FEMALE PC03081532

KCF BENNETT 3008 M326 {DLF HYF IEF MDF}  
 NJW 73S M326 TRUST 100W ET {DLF HYF IEF} RRH MR FELT 3008  
 PC02938213 NJW P606 72N DAYDREAM 73S {DLF HYF IEF} KCF MISS 459 F284  
 NJW 94J DEW 72N {DLF HYF IEF} PW VICTOR BOOMER P606 {MDF}

TDP CROSSOVER Z400 TH 133U 719T UPGRADE 69X {DLF HYF IEF}  
 RVP Z400 FELICITY 108F ASH LIL PEANUT 203P {DLF HYF IEF}  
 PC03046604 MA 11X TAMMY 41Y 19A TH 71U 719T MR HEREFORD 11X {DLF HYF IEF}  
 MA 83T TAMMY 30P ET 41Y {DLF HYF IEF}

**EPDs CE: 4.4 BW: 2.8 WW: 60.9 YW: 107.6 M: 31.2 TM: 61.7**



- Birth weight: 80 lbs. unassisted
- She ranks in the top 1% of the breed for cow weight, the top 5% for yearling weight, the top 9% for rib-eye, the top 10% for total maternal, the top 16% for milk and fat and the top 18% for weaning weight
- This fancy female will be front pasture material in any breeding program



- She ranks in the top 10% of the breed for carcass weight, the top 15% for yearling weight and rib-eye and the top 20% for milk
- Sharp fronted, long bodied, this Hometown granddaughter has done a great job on her daughter at foot.
- Her first daughter, RVP 4040 Harlequin 42H, was selected by Keith Wardrop, Prescott, Ontario
- This attractive three-year old goes back to the breed great — Remitall Catalina 24H
- **AI bred to TH Frontier 174E on April 23, 2021, then exposed to NJW 79Z 199B Cowboss 113H ET from May 29, to August 31, 2021. Pregnancy examined safe to the AI service**



LOT  
14

**14** **MOHICAN CATALINA 26F {DLF HYF IEF MSUDF MDF}** FEMALE  
 POLLED MW 26F February 5, 2018 PC03055693

SHF WONDER M326 W18 ET {DLF HYF IEF MDC}  
 NJW P606 72N DAYDREAM 73S {DLF HYF IEF}  
 BKR SANDERSON 73C 60S {DLF HYF IEF}  
 TDP PEANUT 404U ET

TH 133U 719T UPGRADE 69X {DLF HYF IEF}  
 ASH LIL PEANUT 203P {DLF HYF IEF}  
 PW VICTOR BOOMER P606 {MDF}  
 REMITALL CATALINA 24H

**TDP CUTTING EDGE 410C ET**  
**PA43581054** TDP PEANUT 5X

TDP CROSSOVER Z400  
**MOHICAN CATALINA 39B**  
**PA43490642** WSF LADY CATALINA Z21 ET

**EPDs** CE: 5.1 BW: 2.2 WW: 55.6 YW: 99.7 M: 29.7 TM: 57.5

**14A** **RVP 174E JACINTH 74J** FEMALE  
 POLLED RVP 74J January 27, 2021 PC03080987

TH 403A 475Z PIONEER 358C ET

**TH FRONTIER 174E {MDF}**  
**PC03065148** FTF TRUSTING LADY 312A

TDP CUTTING EDGE 410C ET  
**MOHICAN CATALINA 26F {DLF HYF IEF MSUDF MDF}**  
**PC03055693** MOHICAN CATALINA 39B

TH 89T 755T STOCKMAN 475Z  
 TH 71U 17Y RITA 403A  
 NJW 73S M326 TRUST 100W ET {DLF HYF IEF}  
 FTF BOOM AND BLOOM 8211U

NJW 73S W18 HOMETOWN 10Y ET {DLF HYF IEF MDC}  
 TDP PEANUT 5X  
 TDP CROSSOVER Z400  
 WSF LADY CATALINA Z21 ET

**EPDs** CE: 4.7 BW: 1.7 WW: 64.7 YW: 113.5 M: 29.0 TM: 61.4

- Birth weight: 78 lbs. unassisted
- She ranks in the top 2% of the breed for yearling weight, the top 5% for cow weight, the top 10% for weaning weight, the top 15% for total maternal and the top 20% for rib-eye
- She combines birth weight, pigment, color and style in one attractive package
- Checkout this Frontier daughter with style and awesome data



LOT  
14A

# FINESSE & JUST FINE...



- Her maternal sister, RVP 10Y Groovey 121G, sells as Lot 35
- AI bred to NJW 73S M326 Trust 100W ET on May 6, 2021, then exposed to NJW 79Z 199B Cowboss 113H ET from May 29, to August 31, 2021. Pregnancy examined safe to the AI service

**15** **RVP Z400 FINESSE 104F {DLF HYF IEF MSUDF}** FEMALE  
 POLLED RVP 104F February 14, 2018 PC03045717

TH 122 711 VICTOR 719T {DLF HYF IEF MDF}  
 TH 14S 103R MEGAN 133U  
 MOHICAN MINT 19M  
 ASH MELODY 211M

NS LAKES KILO 002  
 TNJ VICK NIKI 9104 9207C  
 THM 5048 COASTAL 5141  
 THM 4037 DESTINY 7519

TH 133U 719T UPGRADE 69X {DLF HYF IEF}  
 TH 14S 103R MEGAN 133U  
**TDP CROSSOVER Z400**  
**PC02979607** ASH LIL PEANUT 203P {DLF HYF IEF}

LAKE 002 KILOWATTS 104S {DLF HYF IEF}  
**GOBLE ABIGAIL ANN 120A**  
**PC03017481** JLCS KSLG 7519 VICTRA Y68

**EPDs** CE: 4.7 BW: 1.8 WW: 46.2 YW: 79.9 M: 22.1 TM: 45.2

**15A** **RVP 100W JUST FINE 17J** FEMALE  
 POLLED RVP 17J January 6, 2021 PC03080927

KCF BENNETT 3008 M326 {DLF HYF IEF MDF}  
 KCF MISS 459 F284  
 PW VICTOR BOOMER P606 {MDF}  
 NJW 94J DEW 72N {DLF HYF IEF}

TH 133U 719T UPGRADE 69X {DLF HYF IEF}  
 ASH LIL PEANUT 203P {DLF HYF IEF}  
 LAKE 002 KILOWATTS 104S {DLF HYF IEF}  
 JLCS KSLG 7519 VICTRA Y68

TDP CROSSOVER Z400  
**RVP Z400 FINESSE 104F {DLF HYF IEF MSUDF}**  
**PC03045717** GOBLE ABIGAIL ANN 120A

**EPDs** CE: 1.9 BW: 2.9 WW: 56.4 YW: 98.0 M: 28.6 TM: 56.8



- Birth weight: 84 lbs. unassisted
- A carbon copy of her mother
- She ranks in the top 10% of the breed for cow weight, the top 12% for rib-eye, the top 15% for fat and the top 20% for yearling weight

- She ranks in the top 15% of the breed for marbling
- A daughter of the popular sire, Leader, who is a trait leader in ten categories
- AI bred to NJW 11B 6589 Authority 57G ET on August 20, 2021



**16 LFF 406B 6964 JADE 1901**

POLLED 1901  
 HYALITE ON TARGET 936  
**R LEADER 6964**  
**PC03025498** R MISS REVOLUTION 1009

STAR BRITE EXPECTATIONS 33Y ET  
**GOBLE JADE 406B**  
**PA43465310** GOBLE JADA 103Y

**EPDs** CE: 0.7 BW: 2.6 WW: 59.8 YW: 94.3 M: 23.8 TM: 53.7

**FEMALE**  
**PC03067360**  
 January 15, 2019  
 SCHU-LAR ON TARGET 22S  
 HYALITE TS LASS 310  
 MSU TCF REVOLUTION 4R {DLF HYF IEF}  
 R MISS WRANGLER 3007  
 STAR BRIGHT FUTURE 533P ET  
 STAR MISS AMERICA 12P {DLF HYF IEF}  
 LAKE 002 KILOWATTS 104S {DLF HYF IEF}  
 GRF JADE 926

**16A RVP 46A RIVER VALLEY JADE 123J**

POLLED RVP 123J  
 BOYD WORLDWIDE 9050 ET {DLF HYF IEF MDF}  
**RVP 9050 ARCHITECT 46A {DLF HYF IEF}**  
**PC02981745** RVP RCV 100W YE HAW 130Y {DLF HYF IEF}

R LEADER 6964  
**LFF 406B 6964 JADE 1901**  
**PC03067360** GOBLE JADE 406B

**EPDs** CE: 0.3 BW: 1.5 WW: 62.0 YW: 93.5 M: 27.0 TM: 58.0

**FEMALE**  
**PC03081681**  
 March 3, 2021  
 SHF RIB EYE M326 R117 {DLF HYF IEF}  
 MSU TCF RACHAEL 22S ET  
 NJW 73S M326 TRUST 100W ET {DLF HYF IEF}  
 RVP 36N TOUCH OF GOLD ET 10T {DLF HYF IEF}  
 HYALITE ON TARGET 936  
 R MISS REVOLUTION 1009  
 STAR BRITE EXPECTATIONS 33Y ET  
 GOBLE JADA 103Y

- Birth weight: 78 lbs. unassisted
- She ranks in the top 15% of the breed for weaning weight and the top 20% for birth weight
- Long bodied, sharp fronted and only a March baby
- This daughter of Architect will be a great cow prospect



# GLORY & JUMP FOR GLORY...



- She ranks in the top 25% of the breed for marbling
- After seeing this two-year-old, you can understand why we are high on her sire Direction
- Angular, broody with all the maternal tools required
- A maternal sister, RVP Z400 Emily 110E, was selected by J&L Cattle Services, Jeromesville, Ohio and Aaron Doty, Lisbon, New York also selected a full sister
- **AI bred to NJW 73S M326 Trust 100W ET on May 1, 2021, then exposed to NJW 79Z 199B Cowboss 113H ET from May 29, to August 31, 2021. Pregnancy examined safe to the AI service**

**17** **MAPLE-HILL 119D GLORY 23G** **FEMALE**  
 POLLED MHH 23G February 27, 2019 PC03061312

SHF WONDER M326 W18 ET {DLF HYF IEF MDC}  
**RVP W18 DIRECTION ET 119D** {DLF HYF IEF MSUDF MDC}  
**PC02981745** STAR ROSE GARDON 13X ET {DLF HYF IEF MSUDF}

ANL P606 UNIVERSE ET 17U  
**ANL 17U EMILY 34A**  
**PC02981224** BAR-J-M EMILY 5Y {DLF HYF IEF}

EPDs CE: 1.0 BW: 2.1 WW: 46.6 YW: 77.7 M: 21.1 TM: 44.4

KCF BENNETT 3008 M326 {DLF HYF IEF MDF}  
 SHF GOVERNESS 236G L37  
 REMITALL ONLINE 122L  
 GERBER 774 ROSY LANE 623S {DLF HYF IEF}

PW VICTOR BOOMER P606 {MDF}  
 ANL 57G MINDY 14L  
 MHPH 101S UMPIRE 118U {DLF HYF IEF MSUDF MDF}  
 BAR-J-M TWIP 23W {DLF HYF IEF}

**17A** **RVP 174E JUMP FOR GLORY 119J** **FEMALE**  
 POLLED RVP 119J February 25, 2021 PC03081551

TH 403A 475Z PIONEER 358C ET  
**TH FRONTIER 174E** {MDF}  
**PC03065148** FTF TRUSTING LADY 312A

RVP W18 DIRECTION ET 119D {DLF HYF IEF MSUDF MDC}  
**MAPLE-HILL 119D GLORY 23G**  
**PC03061312** ANL 17U EMILY 34A

EPDs CE: 4.8 BW: 1.3 WW: 59.3 YW: 101.1 M: 24.7 TM: 54.4

TH 89T 755T STOCKMAN 475Z  
 TH 71U 17Y RITA 403A  
 NJW 73S M326 TRUST 100W ET {DLF HYF IEF}  
 FTF BOOM AND BLOOM 8211U

SHF WONDER M326 W18 ET {DLF HYF IEF MDC}  
 STAR ROSE GARDON 13X ET {DLF HYF IEF MSUDF}  
 ANL P606 UNIVERSE ET 17U  
 BAR-J-M EMILY 5Y {DLF HYF IEF}



- Birth weight: 72 lbs. unassisted
- She ranks in the top 14% of the breed for yearling weight, the top 18% for birth weight and the top 20% for rib-eye
- Almost a March baby, she combines quality with style
- This fancy daughter is sired by TH Frontier 174E, a changer bull who is a trait leader in 10 categories

- She ranks in the top 8% of the breed for birth weight and the top 12% for calving ease
- Her mother, RVP 100W Delightful 16D is working in the Rockedge Herefords herd, Bernie & Jordan Cunningham, Inverary, Ontario
- A maternal sister to 130F by Bazinga, was selected by A-J's Acres, New Liskeard, Ontario
- Pasture exposed to NJW 79Z 199B Cowboss 113H ET from May 29, to August 31, 2021. Checked bred 25 days on July 19, 2021 to the pasture service



LOT  
18

**18** **RVP 58D MISS FASINATION 130F {MDF}** FEMALE  
 POLLED RVP 130F March 12, 2018 PC03052612

SHF WONDER M326 W18 ET {DLF HYF IEF MDC}  
**RVP W18 DRIVEN ET 58D {DLF HYF IEF MSUDF}**  
**PC03025918** STAR ROSE GARDON 13X ET {DLF HYF IEF MSUDF}

SHF GOVERNESS 236G L37  
 REMITALL ONLINE 122L  
 GERBER 774 ROSY LANE 623S {DLF HYF IEF}

KCF BENNETT 3008 M326 {DLF HYF IEF MDF}  
 NJW P606 72N DAYDREAM 73S {DLF HYF IEF}  
**RVP 100W DELIGHTFUL 16D {DLF HYF IEF MSUDF}**  
**PC03017818** BOYD 3001 FASINATION 3503 {DLF HYF IEF MSUDF}

KCF BENNETT 3008 M326 {DLF HYF IEF MDF}  
 NJW 98S DURANGO 44U {DLF HYF IEF}  
 BOYD Z86 FASINATION 3001 ET

**EPDs** CE: 7.8 BW: 0.2 WW: 43.1 YW: 70.8 M: 20.6 TM: 42.2

**18A** **RVP 119D MISS JOCLARITY 29J {DLF HYF IEF MSUDF}** FEMALE  
 POLLED RVP 29J January 12, 2021 PC03083570

NJW 73S M326 TRUST 100W ET {DLF HYF IEF}  
**RVP 100W BAZINGA 29B {DLF HYF IEF}**  
**PC02994060** REMITALL FLOWER GIRL 4T {DLF HYF IEF}

KCF BENNETT 3008 M326 {DLF HYF IEF MDF}  
 NJW P606 72N DAYDREAM 73S {DLF HYF IEF}  
 STAR OBF BOGART 5L  
 HINTERLAND SWAMP GIRL 51R {DLF HYF IEF MSUDF}

RVP W18 DRIVEN ET 58D {DLF HYF IEF MSUDF}  
**RVP 58D MISS FASINATION 130F {MDF}**  
**PC03052612** RVP 100W DELIGHTFUL 16D {DLF HYF IEF MSUDF}

SHF WONDER M326 W18 ET {DLF HYF IEF MDC}  
 STAR ROSE GARDON 13X ET {DLF HYF IEF MSUDF}  
 NJW 73S M326 TRUST 100W ET {DLF HYF IEF}  
 BOYD 3001 FASINATION 3503 {DLF HYF IEF MSUDF}

**PE EPDs** CE: 3.0 BW: 2.4 WW: 55.5 YW: 90.7 M: 26.1 TM: 53.8

- Birth weight: 82 lbs. unassisted
- A calf that could make an excellent junior project



LOT  
18A

# FERGIE & JOY...



- A genetic package with royalty- by the breed great Umpire an Agribition Champion, his sire also an Agribition Grand Champion and having Nita, Mira and Sarah combines powerful, predictable genetics
- AI bred to NJW 73S M326 Trust 100W ET on May 1, 2021, then exposed to NJW 79Z 199B Cowboss 113H ET from May 29, to August 31, 2021. Pregnancy examined safe to the AI service

**19** **RVP 118U FERGIE 41F {DLF HYF IEF MSUDF}** FEMALE  
 POLLED RVP 41F January 10, 2018 PC03045720  
 BNMHPH 13P HEAT 101S {DLF HYF IEF MDF}  
 ANL PBG 29F BONNIE 21P  
**MHPH 101S UMPIRE 118U {DLF HYF IEF MSUDF MDF}**  
**PC02909473** MHPH MS 68M NITA 1112R {DLF HYF IEF}  
 STAR AMERICA BNMHPH SS MKS 68M {DLF HYF IEF}  
 MHPH MS 29F NITA 112L {DLF HYF IEF}  
 SHF TAHOE R117 T100 {DLF HYF IEF MSUDF}  
 HAROLDSON'S 37H MIRA ET 62K  
 HAROLDSONS WLC MOTIVE ET 41Y {DLF HYF IEF}  
**HAROLDSON'S ANL SARAH 41Y 29B**  
**PC02998847** HAROLDSON'S SARAH 122L 22R  
 REMITALL PATRIOT ET 13P  
 REMITALL ONLINE 122L  
 HAROLDSON'S SARAH 2Z 29D

**EPDs** CE: -2.4 BW: 4.0 WW: 47.4 YW: 81.5 M: 21.0 TM: 44.7

**19A** **RVP 203D JOY 118J** FEMALE  
 POLLED RVP 118J February 24, 2021 PC03082118  
 NJW 135U 10Y HOMETOWN 27A {MDC}  
**NJW 76S 27A LONG RANGE 203D ET {MDF}**  
**PC03070970** NJW 55N STARDUST 76S  
 NJW 73S W18 HOMETOWN 10Y ET {DLF HYF IEF MDC}  
 NJW 4037 34S DURANGO VACA 135U  
 NJW BW TRAILDUST 161L {MDF}  
 NJW 57G SPIRIT QUEEN 55N ET  
 BNMHPH 13P HEAT 101S {DLF HYF IEF MDF}  
 MHPH MS 68M NITA 1112R {DLF HYF IEF}  
 HAROLDSONS WLC MOTIVE ET 41Y {DLF HYF IEF}  
**HAROLDSON'S SARAH 122L 22R**  
 MHPH 101S UMPIRE 118U {DLF HYF IEF MSUDF MDF}  
**RVP 118U FERGIE 41F {DLF HYF IEF MSUDF}**  
**PC03045720** HAROLDSON'S ANL SARAH 41Y 29B

**EPDs** CE: 3.0 BW: 2.8 WW: 54.4 YW: 93.4 M: 26.4 TM: 53.6



- Birth weight: 79 lbs. unassisted
- She ranks in the top 5% of the breed for maternal calving ease and the top 18% for cow weight
- One of the few daughters of Long Range we will offer — they are complete from every angle and will be great daughters in production

- She ranks in the top 8% of the breed for fat
- AI bred to NJW 73S M326 Trust 100W ET on May 1, 2021, then exposed to NJW 79Z 199B Cowboss 113H ET from May 29, to August 31, 2021. Pregnancy examined safe to the AI service



**LOT  
20**

**20 RWB GENESIS 6G**  
POLLED RWB 6G

March 14, 2019 FEMALE PC03062829  
SHF RIB EYE M326 R117 {DLF HYF IEF}  
NCX MISS JR NELLIE 528N  
RU 20X GALAXY 58G  
OVHF UPPERCLASS 31U {DLF HYF IEF}  
RVP 6056 XCALIBUR 51X {DLF HYF IEF}  
RVP 57U YEAH 68Y {DLF HYF IEF}  
GH COL PATTON 20P  
BAR-J-M RELIANCE 29S

AXA GOLDEN-OAK XCEED ET 704X {DLF HYF IEF MDF}  
**AXA 704X DOMINATOR 103D {DLF HYF IEF}**  
PC03021018 SSAL GLEE 1X

RVP 51X ARROW 12A {DLF HYF IEF}  
**RWB DIVA 5D**  
PC03021136 BAR-J-M ANNIE 9W

**EPDs CE: -4.5 BW: 5.4 WW: 51.9 YW: 83.7 M: 22.2 TM: 48.2**

**20A RVP 46A JUMP 117J**  
POLLED RVP 117J

February 24, 2021 FEMALE PC03081550  
SHF RIB EYE M326 R117 {DLF HYF IEF}  
MSU TCF RACHAEL 22S ET  
NJW 73S M326 TRUST 100W ET {DLF HYF IEF}  
RVP 36N TOUCH OF GOLD ET 10T {DLF HYF IEF}  
AXA GOLDEN-OAK XCEED ET 704X {DLF HYF IEF MDF}  
SSAL GLEE 1X  
RVP 51X ARROW 12A {DLF HYF IEF}  
BAR-J-M ANNIE 9W

BOYD WORLDWIDE 9050 ET {DLF HYF IEF MDF}  
**RVP 9050 ARCHITECT 46A {DLF HYF IEF}**  
PC02981745 RVP RCY 100W YE HAW 130Y {DLF HYF IEF}

AXA 704X DOMINATOR 103D {DLF HYF IEF}  
**RWB GENESIS 6G**  
PC03062829 RWB DIVA 5D

**EPDs CE: 0.7 BW: 3.0 WW: 58.2 YW: 88.4 M: 26.2 TM: 55.3**

- Birth weight: 80 lbs. unassisted
- She ranks in the top 15% of the breed for fat
- Her sire Architect is still walking the pastures at River Valley and is still sound in every way. Buy these Architects with confidence.



**LOT  
20A**

# GOLDEN ESSANCE & JASMINE ESSANCE...



- Her mother was selected by Crystal Brook Farm, Danville, Quebec
- High capacity, deep bodied two-year-old with a classy daughter at foot
- AI bred to NJW 73S M326 Trust 100W ET on March 27, 2021, then exposed to NJW 79Z 199B Cowboss 113H ET from May 29, to August 31, 2021. Pregnancy examined safe to the AI service

**21 RVP 131E GOLDEN ESSANCE 33G** FEMALE  
 POLLED RVP 33G January 8, 2019 PC03058006

BOYD FT KNOX 17Y XZ5 4040  
**RVP 4040 GOLD BULLION 131E {DLF HYF IEF MSUDF}**  
**PC03044657** 5STAR 9001W CAROLINE 505

RVP 9050 ARCHITECT 46A {DLF HYF IEF}  
**RVP 46A ESSANCE 68E**  
**PC03032067** RVP 101N CHELSA 58C

TH 22R 16S LAMBEAU 17Y  
 DOSS MY EYES ADORE U DHZ5  
 PWF RHF 25L WRANGLER 9001W  
 SSF 503 LADY MASTERPIECE 137

BOYD WORLDWIDE 9050 ET {DLF HYF IEF MDF}  
 RVP RCY 100W YE HAW 130Y {DLF HYF IEF}  
 BLAIR-ATHOL 13K MAJOR 101N {DLF HYF IEF}  
 SRF RACHAEL 4R 304Y {DLF HYF IEF}

**EPDs CE: 5.4 BW: 1.9 WW: 58.0 YW: 89.9 M: 25.5 TM: 54.5**

**21A RVP 46A JASMINE ESSANCE 94J** FEMALE  
 POLLED RVP 94J February 3, 2021 PC03081535

BOYD WORLDWIDE 9050 ET {DLF HYF IEF MDF}  
**RVP 9050 ARCHITECT 46A {DLF HYF IEF}**  
**PC02981745** RVP RCY 100W YE HAW 130Y {DLF HYF IEF}

RVP 4040 GOLD BULLION 131E {DLF HYF IEF MSUDF}  
**RVP 131E GOLDEN ESSANCE 33G**  
**PC03058006** RVP 46A ESSANCE 68E

SHF RIB EYE M326 R117 {DLF HYF IEF}  
 MSU TCF RACHAEL 22S ET  
 NJW 73S M326 TRUST 100W ET {DLF HYF IEF}  
 RVP 36N TOUCH OF GOLD ET 10T {DLF HYF IEF}

BOYD FT KNOX 17Y XZ5 4040  
 5STAR 9001W CAROLINE 505  
 RVP 9050 ARCHITECT 46A {DLF HYF IEF}  
 RVP 101N CHELSA 58C

**EPDs CE: 7.1 BW: 0.5 WW: 59.3 YW: 88.3 M: 27.9 TM: 57.6**



- Birth weight: 45 lbs. unassisted
- She ranks in the top 10% of the breed for birth weight and the top 15% for calving ease
- Moderate, low birth weight and appealing



- She ranks in the top 15% of the breed for milk, total maternal and fat
- A hard working beef cow who puts it all in her calf
- A maternal sister is working in our yearling pasture
- Her mother, 34Z, is doing a wonderful job for Aspen Lane Farm, Stoughton, Saskatchewan and is the mother of Blazing Gun, herd bull for Rollyview Polled Herefords, Westlock, Saskatchewan
- **AI bred to NJW 11B 6589 Authority 57G ET on May 1, 2021, then exposed to NJW 79Z 199B Cowboss 113H ET from May 29, to August 31, 2021. Pregnancy examined safe to the AI service**



**22 GLENLEES DBK 72C CANDI 21F**

**POLLED** AHL 21F February 12, 2018 **FEMALE** PC03050911  
 NJW 67U 28M BIG MAX 22Z {HYF}  
**NJW 79Z 22Z HEAVY DUTY 72C ET {MDF}**  
**PC03039849** BW 91H 100W RITA 79Z ET  
 MEADOW-ACRES CONNECTED 13K 86R  
**MIL-WRAY CANDI 34Z**  
**PC02974358** MIL-WRAY MOLLY 28S  
**EPDs** CE: -0.7 BW: 4.5 WW: 57.0 YW: 94.8 M: 31.2 TM: 59.7

**22A RVP 65B JUST THE FACTS 130J**

**POLLED** RVP 130J March 7, 2021 **FEMALE** PC03081683  
 TH 122 71I VICTOR 719T {DLF HYF IEF MDF}  
 TH 122 71I DOMINETTE 512X ET  
 HARVIE SAFNBFI COLATERAL 337U  
 MC E CC OPTIMA 23H T737 ET  
 NJW 67U 28M BIG MAX 22Z {HYF}  
 BW 91H 100W RITA 79Z ET  
 MEADOW-ACRES CONNECTED 13K 86R  
 MIL-WRAY MOLLY 28S  
**EPDs** CE: -0.8 BW: 3.6 WW: 60.7 YW: 99.3 M: 24.9 TM: 55.3

- Birth weight: 84 lbs. unassisted
- She ranks in the top 15% for cow weight and fat; the top 18% for yearling weight and the top 20% for weaning weight
- Showman's alert... she could get competitive
- Just a March baby out of a great program



# TANYA & JACKIE...



- A daughter of the 2014 Reserve Grand Champion at Canadian Western Agribition, ANL A XLP Action ET 75Z, a sire who has contributed to many fine daughters in production.
- Her mother, Tanya 50W has produced daughters selected by McMurry Cattle in Montana and Crissy Webb for her junior program, 50W is the mother of "Gold" herd bull for Kirby-Lone Pine, Vibank, Saskatchewan and Remi Mitchell, Francis, Saskatchewan
- AI bred to NJW 73S M326 Trust 100W ET on April 6, 2021, then exposed to NJW 79Z 199B Cowboss 113H ET from May 29, to August 31, 2021. Pregnancy examined safe to the AI service

**23** **KIRBY-LONEPINE TANYA 50G** **FEMALE**  
 POLLED LPK 50G February 12, 2019 PC03058166

TH 89T 743 UNTAPPED 425X ET {DLF HYF IEF}  
**ANL A XLP ACTION ET 75Z {DLF HYF IEF}**  
 PC02977871 ANL PBG 3N SPLENDOUR 143T {DLF HYF IEF}

GHR TAURUS 4J 42T {DLF HYF IEF}  
**SQUARE-D TANYA 50W {DLF HYF IEF}**  
 PC02929885 WILGOR 55K ROXANNE 5R

EPDs CE: -2.5 BW: 3.7 WW: 55.0 YW: 88.4 M: 25.0 TM: 52.5

**23A** **RVP 81E JACKIE 28J** **FEMALE**  
 POLLED RVP 28J January 12, 2021 PC03080932

CHURCHILL SENSATION 028X {DLF HYF IEF}  
**NJW 160B 028X HISTORIC 81E ET {MDF}**  
 PC03072832 NJW 73S 38W DAYDREAM 160B

ANL A XLP ACTION ET 75Z {DLF HYF IEF}  
**KIRBY-LONEPINE TANYA 50G**  
 PC03061696 SQUARE-D TANYA 50W {DLF HYF IEF}

EPDs CE: 5.1 BW: 0.4 WW: 50.2 YW: 78.7 M: 32.2 TM: 57.3



- Birth weight: 66 lbs. unassisted
- She ranks in the top 8% of the breed for rib-eye and the top 9% for birth weight and milk
- After seeing what her mother has done in her first calf, consider the future of this front pasture star



**24** **SQUARE-D DIXIE 206F {MDC}**  
 POLLED SAZ 206F March 14, 2018 FEMALE PC03050773  
 SHF WONDER M326 W18 ET {DLF HYF IEF MDC}  
 NJW 73S W18 HOMEGROWN 8Y ET {DLF HYF IEF MDC}  
**SQUARE-D POWER POINT 716B {DLF HYF IEF MDC}**  
**PC02998743** SQUARE-D EMILY 561Y  
 SQUARE-D MILESTONE ET 44P {DLF HYF IEF}  
 MUDDY 610K LASSIE 79M 610R  
 WILGOR 55K NORTHEASTERN 0L 2N {DLF HYF IEF}  
 SQUARE-D FORUM 440W {DLF HYF IEF}  
**SQUARE-D OLIVIA 706Y**  
**PC02963570** SQUARE-D RITA 460W  
**EPDs** CE: 1.4 BW: 4.6 WW: 55.6 YW: 89.1 M: 33.8 TM: 61.6

- She ranks in the top 6% of the breed milk, the top 9% for maternal calving ease and the top 11% for total maternal
- Maternal sisters are working at North Bluff Farms. Inc., Abbotsford, British Columbia; Remital West Polled Herefords, Olds, Alberta and Redline Livestock, Didsbury, Alberta. A maternal brother was purchased by Lawrence King, Manitoba
- Plenty of high maternal values in this young three-year-old
- Pasture exposed to NJW 79Z 199B Cowboss 113H ET from May 29, to August 31, 2021. Safe in calf

**REFERENCE SIRE...**

**RVP 14Z BRANSON 65B {DLF HYF IEF}**

- Ranks in the top 1% of the breed for cow weight, the top 8% for fat, the top 12% for weaning weight and the top 15% for yearling weight
- Daughters sell

**24A** **RVP 65B JUKE BOX 142J {MDF}**  
 POLLED RVP 142J March 21, 2021 FEMALE PC03081686  
 TH 122 711 VICTOR 719T {DLF HYF IEF MDF}  
 TH 122 711 DOMINETTE 512X ET  
 HARVIE SAFNBFI COLATERAL 337U  
 MC E CC OPTIMA 23H T737 ET  
 NJW 73S W18 HOMEGROWN 8Y ET {DLF HYF IEF MDC}  
 SQUARE-D EMILY 561Y  
 SQUARE-D FORUM 440W {DLF HYF IEF}  
 SQUARE-D RITA 460W  
 TH 512X 719T PLAYMAKER 14Z {MDF}  
**RVP 14Z BRANSON 65B {DLF HYF IEF}**  
**PC02995465** E MC 337U DIVA X50 {DLF HYF IEF MSUDF}  
 SQUARE-D POWER POINT 716B {DLF HYF IEF MDC}  
**SQUARE-D DIXIE 206F {MDC}**  
**PC03050773** SQUARE-D OLIVIA 706Y  
**EPDs** CE: 0.5 BW: 3.2 WW: 58.6 YW: 94.2 M: 26.0 TM: 55.3

- Birth weight: 83 lbs. unassisted
- She ranks in the top 20% for cow weight



RVP 14Z Branson 65B - Reference Sire

# YVETTE & JUJUBE...



**25** **C&T BREEZEWAY 24E YVETTE 19G**  
 POLLED TL 19G March 5, 2019 FEMALE PC03063122  
 REMITALL-W 50 SHADES ET 12C {DLF HYF IEF MSUDF}  
**REMITALL-W CONNECTED ET 24E {DLF HYF IEF MSUDF}**  
**PC03036039** REMITALL-WEST YELLOW ROSE 2Y {DLF HYF IEF}  
 MHPH 13P STETSON 102S {DLF HYF IEF MSUDF}  
**C&T 102S YVETTE 16Y**  
**PC02971578** CHADMORE MELLO MAGMA 26P  
**EPDs** CE: -4.1 BW: 4.5 WW: 51.2 YW: 83.5 M: 24.4 TM: 50.0

- She ranks in the top 16% of the breed for fat
- A fancy, moderate framed Connected daughter with sharpness and style
- A maternal sister, Becca 60B, is working in the herd of Phantom Creek Livestock, Swift Current, Saskatchewan
- Note that this two-year-old is sired by Connected, the son of the prolific donor Remitall-West Yellow Rose 2Y
- AI bred to NJW 73S M326 Trust 100W ET on March 23, 2021, then exposed to NJW 79Z 199B Cowboss 113H ET from May 29 to August 31, 2021. Pregnancy examined safe to the AI service

**25A** **RVP 6153 JUJUBE 82J**  
 POLLED RVP 82J January 30, 2021 FEMALE PC03081530  
 R LEADER 6964  
**BOYD 31Z BLUEPRINT 6153 {MDF}**  
**PC03053820** NJW 91H 100W RITA 31Z ET  
 REMITALL-W CONNECTED ET 24E {DLF HYF IEF MSUDF}  
**C&T BREEZEWAY 24E YVETTE 19G**  
**PC02971578** C&T 102S YVETTE 16Y  
**EPDs** CE: 2.6 BW: 3.9 WW: 58.2 YW: 93.2 M: 24.6 TM: 53.7

- Birth weight: 84 lbs. unassisted
- Like mother, like daughter!



Boyd 31Z Blueprint 6153 - Sire of Lot 25A



Here is a great investment opportunity to buy into a cow family that is the cornerstone at River Valley

**26** **RVP 118U GO GIRL ET 124G {DLF HYF IEF MSUDF}** FEMALE  
 POLLED RVP 124G February 20, 2019 PC03061237

BNMHPH 13P HEAT 101S {DLF HYF IEF MDF}  
**MHPH 101S UMPIRE 118U {DLF HYF IEF MSUDF MDF}**  
**PC02909473** MHPH MS 68M NITA 1112R {DLF HYF IEF}

REMITALL PATRIOT ET 13P  
 ANL PBG 29F BONNIE 21P  
 STAR AMERICA BNMHPH SS MKS 68M {DLF HYF IEF}  
 MHPH MS 29F NITA 112L {DLF HYF IEF}

KCF BENNETT 3008 M326 {DLF HYF IEF MDF}  
 NJW P606 72N DAYDREAM 73S {DLF HYF IEF}  
 HF 4L BEYOND 36N  
 HAROLDSON'S CANDACE 122L 27N

NJW 73S M326 TRUST 100W ET {DLF HYF IEF}  
**RVP RCY 100W YE HAW 130Y {DLF HYF IEF}**  
**PC02952240** RVP 36N TOUCH OF GOLD ET 10T {DLF HYF IEF}

**EPDs CE: -3.4 BW: 5.1 WW: 60.6 YW: 99.8 M: 26.6 TM: 56.9**

- She ranks in the top 15% of the breed for yearling weight, the top 18% for weaning weight and the top 20% for cow weight
- Out of a premiere cow family and prolific donor 130Y who has produced the great breeding bull Architect, herd sire at River Valley, the Fortitude herd sire at Landrum Family Farms, Warren, Indiana and the Gentry bull working for Isaac Milliken. Females of 130Y have been selected by Shady Birch Farms, Grafton, Ted Russell Ltd., Perth, Stonewood Grange, Lakefield, Ontario and ANL Polled Herefords, Steelman, Saskatchewan, and we have five daughters in the herd
- Her sire and grandsire were both Agribition Champions
- Exposed to NJW 79Z 199B Cowboss 113H ET from May 29, to August 31, 2021. Pregnancy examined safe

**26A** **RVP 131E JOY RIDE 45J** FEMALE  
 POLLED RVP 45J January 17, 2021 PC03080976

BOYD FT KNOX 17Y XZ5 4040  
**RVP 4040 GOLD BULLION 131E {DLF HYF IEF MSUDF}**  
**PC03044657** 5STAR 9001W CAROLINE 50S

TH 22R 16S LAMBEAU 17Y  
 DOSS MY EYES ADORE U DHZ5  
 PWF RHF 25L WRANGLER 9001W  
 SSF 503 LADY MASTERPIECE 137

MHPH 101S UMPIRE 118U {DLF HYF IEF MSUDF MDF}  
**RVP 118U GO GIRL ET 124G {DLF HYF IEF MSUDF}**  
**PC03061237** RVP RCY 100W YE HAW 130Y {DLF HYF IEF}

BNMHPH 13P HEAT 101S {DLF HYF IEF MDF}  
 MHPH MS 68M NITA 1112R {DLF HYF IEF}  
 NJW 73S M326 TRUST 100W ET {DLF HYF IEF}  
 RVP 36N TOUCH OF GOLD ET 10T {DLF HYF IEF}

**EPDs CE: -3.3 BW: 5.6 WW: 64.4 YW: 103.1 M: 25.2 TM: 57.4**

- Birth weight: 89 lbs. unassisted
- She ranks in the top 10% of the breed for weaning and yearling weight



MHPH 101S Umpire 118U - Sire of Lot 26

# LADY FROSTS...



## 27 JLCS C1 LADY FROST A2 F57

POLLED F57  
 TH 133U 719T UPGRADE 69X {DLF HYF IEF}  
**KH JLCS 69X CUSTOM BUILT C1**  
**PA43601763** CHURCHILL LADY 376A

BOYD NJW STAND OUT 0091 ET  
**JLWG X51 LADY FROST 0091 A2**  
**PA43410174** JLWG 28P VENUS 6170 X51

**EPDs** CE: 2.2 BW: 4.2 WW: 57.7 YW: 95.4 M: 27.0 TM: 55.9

- She ranks in the top 10% of the breed for maternal calving ease
- High volume and deep bodied
- AI bred to NJW 73S M326 Trust 100W ET on April 6, 2021, then exposed to NJW 79Z 199B Cowboss 113H ET from May 29, to August 31, 2021. Pregnancy examined safe to the AI service

## FEMALE PC03054996

April 13, 2018  
 TH 122 711 VICTOR 719T {DLF HYF IEF MDF}  
 TH 14S 103R MEGAN 133U  
 GOLDEN-OAK OUTCROSS 18U {DLF HYF IEF}  
 CHURCHILL LADY 801U ET

THM DURANGO 4037 {DLF HYF IEF}  
 NJW BW LADYSPORT DEW 78P ET {DLF HYF IEF}  
 NXGN DESTINY T01  
 BB MS NEW IDEA 6170

## 27A RVP 100W LADY FROST 11J

POLLED RVP 11J  
 KCF BENNETT 3008 M326 {DLF HYF IEF MDF}  
**NJW 73S M326 TRUST 100W ET {DLF HYF IEF}**  
**PC02938213** NJW P606 72N DAYDREAM 73S {DLF HYF IEF}

KH JLCS 69X CUSTOM BUILT C1  
**JLCS C1 LADY FROST A2 F57**  
**PC03054996** JLWG X51 LADY FROST 0091 A2

**EPDs** CE: 2.3 BW: 3.8 WW: 61.4 YW: 104.5 M: 31.0 TM: 61.7

- Birth weight: 82 lbs. unassisted
- She ranks in the top 5% for cow weight, the top 6% for fat, the top 8% for yearling weight, the top 10% for total maternal, the top 15% for rib-eye and the top 18% for milk and weaning weight
- This daughter of National Champion, Trust, puts it all together, check out the data on this front pasture prospect!



Haroldson's SCC Hawk ET 208E - Reference Sire

## REFERENCE SIRE... HAROLDSON'S SCC HAWK ET 208E {DLF HYF IEF}

- Ranks in the top 1% of the breed for cow weight and the top 18% for carcass weight
- His progeny and service sells



**28 RVP 100W COUNTRY GIRL 4G**  
 POLLED RVP 4G January 2, 2019 FEMALE PC03057992

KCF BENNETT 3008 M326 {DLF HYF IEF MDF}  
 RRH MR FELT 3008  
 NJW 73S M326 TRUST 100W ET {DLF HYF IEF} KCF MISS 459 F284  
 PC02938213 NJW P606 72N DAYDREAM 73S {DLF HYF IEF} PW VICTOR BOOMER P606 {MDF}  
 NJW 94J DEW 72N {DLF HYF IEF}

TH 22R 16S LAMBEAU 17Y  
 TH 71U 17Y MOUNTAINEER 420A {DLF HYF IEF} TH 7N 45P RITA 71U {DLF HYF IEF}  
 ANL 420A RENEE 69A 75C TH 71U 719T MR HEREFORD 11X {DLF HYF IEF}  
 PC03023888 ANL 11X RENEE 92R ET 69A {DLF HYF IEF} ANL 36N RENEE 92R

**EPDs CE: -0.4 BW: 3.9 WW: 65.6 YW: 107.9 M: 31.3 TM: 64.1**

- She ranks in the top 5% of the breed for yearling weight, the top 8% for weaning weight and total maternal, the top 9% for carcass weight, the top 11% for rib-eye area and the top 15% for milk
- For those who are looking for a greater return of investment on a genetic package that will earn dividends, don't overlook this maternal machine — this is a complete package
- Pasture exposed to NJW 79Z 199B Cowboss 113H ET from May 29, to August 31, 2021

**28A RVP 74G COUNTRY GIRL JOJO 149J**  
 POLLED RVP 149J April 18, 2021 FEMALE PC03081679

RVP 9050 ARCHITECT 46A {DLF HYF IEF}  
 RVP 46A GENERAL 74G {DLF HYF IEF MSUDF}  
 PC03064316 RVP Z400 KEEPSAKE 36E

BOYD WORLDWIDE 9050 ET {DLF HYF IEF MDF}  
 RVP RY 100W YE HAW 130Y {DLF HYF IEF}  
 TDP CROSSOVER Z400  
 BOYD 867 KEEPSAKE 4003

KCF BENNETT 3008 M326 {DLF HYF IEF MDF}  
 NJW 73S M326 TRUST 100W ET {DLF HYF IEF} NJW P606 72N DAYDREAM 73S {DLF HYF IEF}  
 RVP 100W COUNTRY GIRL 4G TH 71U 17Y MOUNTAINEER 420A {DLF HYF IEF}  
 PC03057992 ANL 420A RENEE 69A 75C ANL 11X RENEE 92R ET 69A {DLF HYF IEF}

**EPDs CE: 4.1 BW: 2.1 WW: 60.3 YW: 96.5 M: 27.3 TM: 57.5**

- Birth weight: 76 lbs. unassisted
- She ranks in the top 20% for weaning and yearling weight and the top 20% for rib-eye
- One of the youngest in the sale offering
- If you did not get the mother . . . buy the daughter

**REFERENCE SIRE...  
 NJW 11B 6589 AUTHORITY 57G ET**

- Ranks in the top 1% of the breed for weaning weight and cow weight, the top 4% for yearling weight, total maternal and carcass weight, the top 5% for calving ease, the top 18% for rib-eye and the top 20% for birth weight
- Outstanding individual with amazing data to back him up
- His service sells



NJW 11B 6589 Authority 57G ET - Reference Sire

# GLORIA & JACINTH...



- She ranks in the top 20% of the breed for yearling weight
- Her mother, Yvette 13B, produced a daughter selected by Deer Creek Farms, Stephen May, Mt Elgin, Ontario and Maple Dale Farms, Mount Forest, Ontario selected the twin sister to Gloria 27G
- Pasture exposed to NJW 79Z 199B Cowboss 113H ET from May 29, to August 31, 2021

**29** **LONE-SPRUCE 9D GLORIA 27G**  
 POLLED CMB 27G March 29, 2019 FEMALE PC03059314

NJW 73S M326 TRUST 100W ET {DLF HYF IEF}  
 NJW BW LADYSPORT DEW 78P ET {DLF HYF IEF}  
 TH 122 711 VICTOR 719T {DLF HYF IEF MDF}  
 FCC 2U NATASHA 19X

KCF BENNETT 3008 M326 {DLF HYF IEF MDF}  
 NJW P606 72N DAYDREAM 73S {DLF HYF IEF}  
 REMITALL ONLINE 122L  
 AR MILESTONE MISS 139P

NJW 78P TWENTYTWELVE 190Z ET  
**FCC 190Z STORM 9D {DLF HYF IEF MSUDF}**  
**PC03022902** FCC 719T NATASHA 4Z

NJW 73S M326 TRUST 100W ET {DLF HYF IEF}  
**LONE-SPRUCE 100W YVETTE 13B**  
**PC02996965** RVP 122L MISS YVETTE ET 22Y {DLF HYF IEF}

**EPDs** CE: -4.5 BW: 3.8 WW: 57.8 YW: 96.8 M: 23.3 TM: 52.2

**29A** **RVP 46A JACINTH 124J**  
 POLLED RVP 124J March 4, 2021 FEMALE PC03081682

BOYD WORLDWIDE 9050 ET {DLF HYF IEF MDF} MSU TCF RACHAEL 22S ET  
**RVP 9050 ARCHITECT 46A {DLF HYF IEF}**  
**PC02981745** RVP RCV 100W YE HAW 130Y {DLF HYF IEF}

FCC 190Z STORM 9D {DLF HYF IEF MSUDF}  
**LONE-SPRUCE 9D GLORIA 27G**  
**PC03059314** LONE-SPRUCE 100W YVETTE 13B

NJW 73S M326 TRUST 100W ET {DLF HYF IEF}  
 RVP 36N TOUCH OF GOLD ET 10T {DLF HYF IEF}  
 NJW 78P TWENTYTWELVE 190Z ET  
 FCC 719T NATASHA 4Z  
 NJW 73S M326 TRUST 100W ET {DLF HYF IEF}  
 RVP 122L MISS YVETTE ET 22Y {DLF HYF IEF}

**EPDs** CE: -4.0 BW: 1.7 WW: 60.0 YW: 93.0 M: 26.7 TM: 56.7



- Birth weight: 75 lbs. unassisted
- She ranks in the top 20% of the breed for weaning weight
- Just a March Architect with pigment and completeness





**30** **RVP 8Y GOLD ROSE 122G {DLF HYF IEF MSUDF MDF}** **FEMALE**  
 POLLED RVP 122G February 19, 2019 PC03058197  
 SHF WONDER M326 W18 ET {DLF HYF IEF MDC} SHF GOVERNESS 236G L37  
**NJW 73S W18 HOMEGROWN 8Y ET {DLF HYF IEF MDC}** PW VICTOR BOOMER P606 {MDF}  
**PC02987563** NJW P606 72N DAYDREAM 73S {DLF HYF IEF} NJW 94J DEW 72N {DLF HYF IEF}  
 CB 57U CAN DOO 102Y {DLF HYF IEF MSUDF}  
**REMITALL-W GD ROSE ET 16C {DLF HYF IEF}** REMITALL MARVEL 78T {DLF HYF IEF}  
**PC03011381** REMITALL-WEST HAVANA ET 33A {DLF HYF IEF} SHF RIB EYE M326 R117 {DLF HYF IEF}  
 REMITALL-WEST YELLOW ROSE 2Y {DLF HYF IEF} DORBAY MISS WHITNEY 411W {DLF HYF IEF}

**EPDs** CE: -0.3 BW: 3.1 WW: 52.6 YW: 84.2 M: 34.2 TM: 60.5

- She ranks in the top 6% of the breed for milk and the top 15% for total maternal
- A well balanced Homegrown daughter with a square udder and small teats
- A daughter of the 2012 NILE Supreme Champion, NJW Homegrown out of a daughter of the prolific donor Yellow Rose 2Y, a highly maternal package with a great future
- Calved February 8, 2021. Bull calf RVP 102J, retained
- AI bred to NJW 11B 6589 Authority 57G ET on April 5, 2021, then exposed to RVPH 79Z 33B Whit 83H ET from May 30 to June 24, 2021. Pregnancy examined safe to the AI service



# EMILY & MIRA...



- She ranks in the top 10% of the breed for milk and total maternal
- An own daughter of the mother cow maker, TH 71U 719T MR Hereford 11X
- AI bred to NJW 73S M326 Trust 100W ET on May 1, 2021, then exposed to NJW 79Z 199B Cowboss 113H ET from May 29, to August 31, 2021. Pregnancy examined safe to the AI service

**31** **MTF 11X EMILY 01E** **FEMALE**  
 POLLED 01E February 3, 2017 PC03043061

TH 122 71I VICTOR 719T {DLF HYF IEF MDF}  
**TH 71U 719T MR HEREFORD 11X {DLF HYF IEF}**  
 PC02964813 TH 7N 45P RITA 71U {DLF HYF IEF}

DRF JWR PRINCE VICTOR 711  
 KBCR 19D DOMINETTE 122 {DLF IEF}  
 NJW FHF 9710 TANK 45P {DLF HYF IEF MDF}  
 TH 814H 3L RITA 7N

C LR DIESEL 2030 ET {DLF IEF}  
 CS VICKI 637B 34K  
 CC CX UNITED 52S ET {DLF HYF IEF}  
 ELM-LODGE 53R TULIP 78T

LAMBERT REMEDY 2030 75R {DLF HYF IEF}  
**ELM-LODGE BOUQUET 1B**  
 PC02994009 ELM-LODGE 78T WILD THANG 73W

**EPDs** CE: 4.0 BW: 3.0 WW: 60.3 YW: 86.4 M: 32.1 TM: 62.3

**32** **HAROLDSON'S AD MIRA 201D 1G** **FEMALE**  
 POLLED AFSY 1G January 16, 2019 PC03063591

CHURCHILL RED BULL 200Z {DLF HYF IEF MDF}  
**HAROLDSON'S INSIGHT ET 201D {DLF HYF IEF MSUDF}**  
 PC03028164 TL 5073 JESSICA 751U {DLF HYF IEF}

CHURCHILL SENSATION 028X {DLF HYF IEF}  
 CHURCHILL LADY 002X ET  
 SR CG HARD ROCK 5073  
 TT PETUNIA 128P {DLF HYF IEF}

BOYD MASTERPIECE 0220  
**HAROLDSON'S WLC MIRA ET 49B {DLF HYF IEF MSUDF}**  
 PC03000954 HAROLDSON'S 37H MIRA ET 62K

SHF RIB EYE M326 R117 {DLF HYF IEF}  
 SSF P606 MS VICTOR 803  
 REMITALL HOLLYWOOD 37H  
 HAROLDSON'S CU DESTINY 2Z 19G

**EPDs** CE: 3.8 BW: 2.5 WW: 53.2 YW: 89.7 M: 28.0 TM: 54.6



- Pigmented, short marked angular with a great udder formation
- A unique genetic mating out of Haroldson's WLC Mira ET 49B, a donor cow for Moeskaer Polled Herefords in Sweden and going back to the champion producer Mira
- Calved January 24, 2021. Bull calf RVP 661, retained
- AI bred to NJW 73S M326 Trust 100W ET on April 29, 2021, then exposed to RVPH 79Z 33B Whit 83H ET from May 30 to June 24, 2021. Pregnancy examined safe to the AI service

- She ranks in the top 5% of the breed for weaning weight and cow weight and the top 10% for yearling weight and total maternal
- Mated to the new out-cross sire, Innisfail, the results will be exciting!
- A maternal sister was selected by Crystal Brook Farm, Danville, Quebec
- A maternal brother, MHPH 106A Dillinger 1071D is herd bull for Raymond Chittick and Chittick Family Hereford Ranch, Mayerthorpe, Alberta
- Calved February 9, 2021. Bull calf RVP 104J, retained
- **AI bred to Innisfail WHR X651/723 4013 ET on April 23, 2021, then exposed to Haroldson's SCC Hawk ET 208E from June 5 to August 31, 2021. Pregnancy examined safe to the AI service**



**33 GF 106A FROSTY 116E {DLF HYF IEF MDF}** FEMALE  
 POLLED GF 116E January 16, 2017 PC03036675

DRF JWR PRINCE VICTOR 711  
 TH 122 711 VICTOR 521X ET {DLF HYF IEF}  
**MHPH 521X ACTION 106A {DLF HYF IEF MSUDF}**  
 PC02982798 MHPH 301W DAINTY 205Y {DLF HYF IEF MSUDF MDF}

NJW 73S W18 HOMETOWN 10Y ET {DLF HYF IEF MDC}  
**MHPH 10Y FROSTY 302B {DLF HYF IEF}**  
 PC02995071 MHPH MS 2N FROSTY 1013T {DLF HYF IEF}

**EPDs CE: 1.0 BW: 4.3 WW: 66.1 YW: 104.0 M: 28.5 TM: 61.6**

**34 RVP 65B GRANDMAS GIRL 109G** FEMALE  
 POLLED RVP 109G February 8, 2019 PC03058238

TH 122 711 VICTOR 719T {DLF HYF IEF MDF}  
 TH 122 711 DOMINETTE 512X ET  
**RVP 14Z BRANSON 65B {DLF HYF IEF}**  
 PC02995465 E MC 337U DIVA X50 {DLF HYF IEF MSUDF}

NJW 73S M326 TRUST 100W ET {DLF HYF IEF}  
**RVP 100W CARISMA ET 62C {DLF HYF IEF}**  
 PC03009512 RVP 36N TOUCH OF GOLD ET 10T {DLF HYF IEF}

**EPDs CE: 3.0 BW: 1.6 WW: 57.1 YW: 97.3 M: 24.6 TM: 53.2**

- She ranks in the top 1% of the breed for cow weight, the top 18% for fat and the top 20% for birth weight and yearling weight
- Sharp fronted, deep bodied with a very nice udder
- This Branson two year old goes back to "Touch of Gold" a champion and a foundation female at River Valley
- Calved January 23, 2021. Bull calf RVP 62J, retained
- **AI bred to Innisfail WHR X651/723 4013 ET on April 19, 2021, then exposed to RVPH 79Z 33B Whit 83H ET from May 30 to June 24, 2021. Pregnancy examined safe to the AI service**



# GROOVEY & GOTTA BE FOXY...



**LOT  
35**

- She ranks in the top 15% of the breed for fat and the top 25% for milk
- A high volume, deep bodied Hometown first calver who has done a great job
- Her maternal sister, RVP Z400 Finesse 104F, sells as Lot 15
- Her mother was selected by Maple Hill Herefords, Shefford, Quebec
- Calved January 18, 2021. Bull calf RVP 46J, retained
- **AI bred to NJW 11B 6589 Authority 57G ET on August 20, 2021**

**35** **RVP 10Y GROOVEY 121G {DLF HYF IEF MSUDF MDF}** FEMALE  
 HORNED RVP 121G February 18, 2019 C03058103

KCF BENNETT 3008 M326 {DLF HYF IEF MDF}  
 SHF WONDER M326 W18 ET {DLF HYF IEF MDC} SHF GOVERNESS 236G L37  
**NJW 73S W18 HOMETOWN 10Y ET {DLF HYF IEF MDC}** PW VICTOR BOOMER P606 {MDF}  
**PC02987562** NJW P606 72N DAYDREAM 73S {DLF HYF IEF} NJW 94J DEW 72N {DLF HYF IEF}

NS LAKES KILO 002  
 LAKE 002 KILOWATTS 104S {DLF HYF IEF} TNJ VICK NIKI 9104 9207C  
**GOBLE ABIGAIL ANN 120A** THM 5048 COASTAL 5141  
**PC03017481** JLCS KSLG 7519 VICTRA Y68 THM 4037 DESTINY 7519

**EPDs** CE: 4.2 BW: 2.5 WW: 52.3 YW: 82.0 M: 29.4 TM: 55.6

**36** **RVP Z400 GOTTA BE FOXY 4F** FEMALE  
 POLLED RVP 4F January 2, 2018 PC03045579

TH 122 711 VICTOR 719T {DLF HYF IEF MDF}  
 TH 133U 719T UPGRADE 69X {DLF HYF IEF} TH 14S 103R MEGAN 133U  
**TDP CROSSOVER Z400** MOHICAN MINT 19M  
**PC02979607** ASH LIL PEANUT 203P {DLF HYF IEF} ASH MELODY 211M

HH ADVANCE 3196N {DLF IEC}  
 GO 3196 ADVANCE S109 {DLF HYF IEF} GO MS L18 EXCEL N89 {DLF IEF}  
**STAR JJB GOTTA BE ME 169X** REMITALL ONLINE 122L  
**PC02950172** STAR JJB JILLIAN 98U ET STAR JUDY HCF 322J

**EPDs** CE: 2.9 BW: 4.7 WW: 61.7 YW: 107.4 M: 26.1 TM: 57.0



**LOT  
36**

- She ranks in the top 4% of the breed for cow weight, the top 5% for yearling weight and the top 16% for weaning weight
- Deep bodied three year old Z400 daughter with a well-shaped udder attachment
- Calved January 17, 2021. Bull calf RVP 44J, retained
- **AI bred to NJW 73S M326 Trust 100W ET on April 23, 2021, then exposed to RVPH 79Z 33B Whit 83H ET from May 30 to June 24, 2021. Pregnancy examined safe to the AI service**

- She ranks in the top 1% of the breed for maternal calving ease
- The result of mating National Champion Umpire to a daughter by National Champion Trust
- **AI bred to NJW 79Z 33B Forward 252F on April 13, 2021, then exposed to NJW 79Z 199B Cowboss 113H ET from May 29 to August 31, 2021. Pregnancy examined safe to the AI service**



**LOT  
37**

**37 RVP 118U EXCLUSIVE 95E**  
 POLLED RVP 95E February 14, 2017 FEMALE PC03039543

BNMHPH 13P HEAT 101S {DLF HYF IEF MDF}  
**MHPH 101S UMPIRE 118U {DLF HYF IEF MSUDF MDF}**  
**PC02909473** MHPH MS 68M NITA 1112R {DLF HYF IEF}

NJW 73S M326 TRUST 100W ET {DLF HYF IEF}  
**RVP 100W CASHMERE ET 47C {DLF HYF IEF}**  
**PC03009458** RED HILLS MS EMBRACE 8006 L3

REMITALL PATRIOT ET 13P  
 ANL PBG 29F BONNIE 21P  
 STAR AMERICA BNMHPH SS MKS 68M {DLF HYF IEF}  
 MHPH MS 29F NITA 112L {DLF HYF IEF}

KCF BENNETT 3008 M326 {DLF HYF IEF MDF}  
 NJW P606 72N DAYDREAM 73S {DLF HYF IEF}  
 H 8E EMBRACER 8006  
 LCC VICKI 84R Z155 C250

**EPDs CE: 4.8 BW: 3.0 WW: 50.8 YW: 87.2 M: 23.9 TM: 49.3**

**38 MOHICAN MISSY 146E**  
 POLLED MW 146E April 10, 2017 FEMALE PC03055690

TH 133U 719T UPGRADE 69X {DLF HYF IEF}  
**MOHICAN TEN GAUGE 233A**  
**PA43429111** MOHICAN LUCKY LADY 442U ET

BOYD POWERHOUSE 2028 {DLF HYF IEF}  
**MOHICAN VICKY 90C**  
**PA43580822** MOHICAN VICKY 25X

TH 122 711 VICTOR 719T {DLF HYF IEF MDF}  
 TH 145 103R MEGAN 133U  
 REMITALL PATRIOT ET 13P  
 MOHICAN LUCKY LADY 107L

TH 71U 719T MR HEREFORD 11X {DLF HYF IEF}  
 NJW 8S 4037 DOREEN 108X {DLF HYF IEF}  
 SHF RIB EYE M326 R117 {DLF HYF IEF}  
 MOHICAN VICKY 23U

**EPDs CE: 7.8 BW: 1.0 WW: 47.0 YW: 78.3 M: 24.4 TM: 47.9**

- She ranks in the top 12% of the breed for calving ease and the top 14% for birth weight
- A double bred daughter of 719T
- A Lambeau daughter was selected by Casey & Jill Van Kessel, Thornton, Ontario and a Trust daughter was selected by J & L Cattle Services, Jeromesville, Ohio
- Calved January 2, 2021. Bull calf RVP 5J, retained
- **AI bred to NJW 73S M326 Trust 100W ET on April 6, 2021, then exposed to NJW 79Z 199B Cowboss 113H ET from May 29 to August 31, 2021. Pregnancy examined safe to the AI service**



**LOT  
38**

# PERFECT GIRL & EVENING STAR...



- She ranks in the top 9% of the breed for rib-eye, the top 10% for yearling weight and cow weight and the top 18% for carcass weight
- A high volume first calver by the National Champion
- Calved February 4, 2021. Bull calf RVP 99J, retained
- AI bred to NJW 11B 6589 Authority 57G ET on April 4, 2021, then exposed to RVPH 79Z 33B Whit 83H ET from May 30 to June 24, 2021. Pregnancy examined safe to the AI service

**39** **RVP 100W PERFECT GIRL 114G** **FEMALE**  
 POLLED RVP 114G February 11, 2019 PC03058195

RRH MR FELT 3008  
 KCF BENNETT 3008 M326 {DLF HYF IEF MDF} KCF MISS 459 F284  
 NJW 73S M326 TRUST 100W ET {DLF HYF IEF} PW VICTOR BOOMER P606 {MDF}  
 PC02938213 NJW P606 72N DAYDREAM 73S {DLF HYF IEF} NJW 94J DEW 72N {DLF HYF IEF}

CRR ABOUT TIME 743 {DLF HYF IEF MDF}  
 H H PERFECT TIMING 0150 ET {DLF HYF IEF} HH MISS ADVANCE 6041S ET {DLF IEF}  
**GOBLE PERFECT TIMING 408D ET** REMITALL ONLINE 122L  
**PC03043070** CSF 122L ALEXIS 308R ET MSU WF ALEXIS L46

**EPDs** CE: -0.4 BW: 4.0 WW: 61.1 YW: 101.7 M: 26.0 TM: 56.6

**40** **RVP 100W EVENING STAR ET 130E** {DLF HYF IEF MSUDF} **FEMALE**  
 POLLED RVP 130E March 17, 2017 PC03040887

RRH MR FELT 3008  
 KCF BENNETT 3008 M326 {DLF HYF IEF MDF} KCF MISS 459 F284  
**NJW 73S M326 TRUST 100W ET {DLF HYF IEF}** PW VICTOR BOOMER P606 {MDF}  
 PC02938213 NJW P606 72N DAYDREAM 73S {DLF HYF IEF} NJW 94J DEW 72N {DLF HYF IEF}

FELTONS LEGEND 242  
 MSU TCF REVOLUTION 4R {DLF HYF IEF} MSU TCF RACHAEL ET 54N {DLF HYF IEF}  
**MRF RACHAEL 4R Z97 {DLF HYF IEF MSUDF}** THM DURANGO 4037 {DLF HYF IEF}  
**PC02993614** MRF MISS DURANGO X60 MRF VICKY N30

**EPDs** CE: 8.5 BW: 1.5 WW: 52.0 YW: 88.3 M: 27.5 TM: 53.5



- She ranks in the top 5% of the breed for rib-eye, the top 10% for calving ease, the top 15% for fat and the top 18% for birth weight
- Her mother, MRF Rachael 4R Z97, is a donor female in the program
- Maternal sisters to 130E have been selected by Bradley Duke, Regina, Saskatchewan and Cedarwood Polled Herefords, Lindsay, Ontario
- Calved February 10, 2021. Bull calf RVP 105J, retained
- AI bred to Innisfail WHR X651/723 4013 ET on April 23, 2021, then exposed to RVPH 79Z 33B Whit 83H ET from May 30 to June 24, 2021. Pregnancy examined safe to the AI service

- She ranks in the top 18% of the breed for calving ease
- Sharp fronted, red eyed, Leader daughter — straight-lined and eye catching
- Calved February 5, 2021. Bull calf RVP 100J, retained
- Pasture exposed to NJW 11B 6589 Authority 57G ET from May 25 to August 31, 2021. Safe in calf



**41** **STONE-HEDGE GIANA 3G**

POLLED AER 3G

February 14, 2019

**FEMALE**

PC03061768

**R LEADER 6964**  
PC03025498 R MISS REVOLUTION 1009

HYALITE ON TARGET 936

SCHU-LAR ON TARGET 22S  
HYALITE TS LASS 310  
MSU TCF REVOLUTION 4R {DLF HYF IEF}  
R MISS WRANGLER 3007

**STONE-HEDGE EKKO 4E**  
PC03034480 STONE HEDGE CHANEL 3C

BLAIR'S LEGEND R117 ET 11B {DLF HYF IEF MSUDC}

SHF RIB EYE M326 R117 {DLF HYF IEF}  
NCX MISS JR NELLIE 528N  
ELM-LODGE ONETIME 4Y {DLF HYF IEF}  
BIRD'S-HILL DAISY 393W

**EPDs** CE: 7.0 BW: 2.6 WW: 57.7 YW: 90.3 M: 20.8 TM: 49.7

**42** **RVP 46A GALAXY 80G**

POLLED RVP 80G

January 26, 2019

**FEMALE**

PC03058032

**RVP 9050 ARCHITECT 46A {DLF HYF IEF}**  
PC02981745 RVP RCV 100W YE HAW 130Y {DLF HYF IEF}

BOYD WORLDWIDE 9050 ET {DLF HYF IEF MDF} MSU TCF RACHAEL 22S ET  
NJW 73S M326 TRUST 100W ET {DLF HYF IEF}  
RVP 36N TOUCH OF GOLD ET 10T {DLF HYF IEF}

**RVP 91Z ECLIPSE 73E**  
PC03032069 SRF RACHAEL 4R 304Y {DLF HYF IEF}

NJW 59R 88X RIBEYE 91Z {DLF HYF IEF}  
NJW 98S R117 RIBEYE 88X ET {MDF}  
NJW 60D 131A LADYSPORT 59R ET  
MSU TCF REVOLUTION 4R {DLF HYF IEF}  
SRF WYONNA 304W {DLF HYF IEF}

**EPDs** CE: 3.7 BW: 2.9 WW: 61.2 YW: 96.4 M: 25.6 TM: 56.2

- She ranks in the top 16% of the breed for weaning weight and rib-eye
- Calved January 21, 2021. Bull calf RVP 58J, retained
- AI bred to NJW 11B 6589 Authority 57G ET on April 6, 2021, then exposed to NJW 11B 6589 Authority 57G ET, from May 25 to August 31, 2021. Pregnancy examined safe to the AI service



# GLORIA & ABBY...



- She ranks in the top 10% of the breed for milk, total maternal, rib-eye and cow weight, the top 15% for yearling weight and the top 20% for weaning weight and maternal calving ease
- A sharp angular Trust two year old
- A maternal sister, RVP 41A Delicia 84D, was selected by Robert Lockridge
- Calved January 30, 2021. Bull calf RVP 80J, retained
- **AI bred to NJW 11B 6589 Authority 57G ET on April 10, 2021, then exposed to RVPH 79Z 33B Whit 83H ET from May 30 to June 24, 2021. Pregnancy examined safe to the AI service**

**43 RVP 100W GLORIA 88G**  
 POLLED RVP 88G January 31, 2019 FEMALE PC03058037

RRH MR FELT 3008  
 KCF BENNETT 3008 M326 {DLF HYF IEF MDF}  
 KCF MISS 459 F284  
**NJW 73S M326 TRUST 100W ET {DLF HYF IEF}**  
**PC02938213** NJW P606 72N DAYDREAM 73S {DLF HYF IEF}  
 NJW 94J DEW 72N {DLF HYF IEF}

SHF RIB EYE M326 R117 {DLF HYF IEF}  
 SSF P606 MS VICTOR 803  
 REMITALL SUPER DUTY 42S {DLF HYF IEF}  
 SQUARE-D NADIA 323P

BOYD MASTERPIECE 0220  
**WCC 0220 VICTORIA 1423B**  
**PC03004286** SQUARE-D RITA 2023Z

**EPDs CE: 1.9 BW: 3.0 WW: 60.0 YW: 99.4 M: 32.0 TM: 62.0**

**44 HAROLDSON'S AH ABBY 743 9F**  
 POLLED AFSY 9F February 19, 2018 FEMALE PC03051384

THM DURANGO 4037 {DLF HYF IEF}  
**CRR ABOUT TIME 743 {DLF HYF IEF MDF}**  
**PC02935725** CRR D03 CASSIE 206

HAROLDSONS WLC RHINO ET 48Y {DLF HYF IEF}  
**HAROLDSON'S ABBY 48Y 12D {DLF HYF IEF MSUDF MDF}**  
**PC03023248** RVP 45S YULETIDE LADY 16Y

CS BOOMER 29F {DLF HYF IEF}  
 THM 7085 VICTRA 9036 {DLF HYF IEF}  
 SHF INTERSTATE 20X D03 {MDF}  
 CRR 475E CASSIE 838

SHF TAHOE R117 T100 {DLF HYF IEF MSUDF}  
 HAROLDSON'S 37H MIRA ET 62K  
 STAR 2013 BATTLE CRY 45S {DLF HYF IEF}  
 RVP 115N WINTER LADY 30W

**EPDs CE: -2.7 BW: 4.3 WW: 57.5 YW: 94.9 M: 30.8 TM: 59.6**



- She ranks in the top 14% of the breed for cow weight, the top 18% for milk, total maternal and fat and the top 20% for rib-eye
- A combination of maternal and carcass values
- Her mother Abby 12D was selected by Medonte Highlands Polled Herefords, Orillia, Ontario
- Calved February 4, 2021. Bull calf RVP 96J, retained
- **AI bred to NJW 11B 6589 Authority 57G ET on March 23, 2021, then exposed to RVPH 79Z 33B Whit 83H ET from May 30 to June 24, 2021. Pregnancy examined safe to the AI service**





**45** **BOYD 867 KEEPSAKE 4003** **FEMALE**  
 POLLED 4003 December 5, 2013 PC03017483

TH 121L 63N TUNDRA 16S  
**TH 22R 16S LAMBEAU 17Y**  
**PC02997467** TH 62N 3L KELSEY 22R

SSF JJD SHREK 669  
**SSF BBC 669 KEEPSAKE 867**  
**PA42714794** BOYD 944Y KEEPSAKE 36J

TH JWR SOP 166 57G TUNDRA 63N {DLF HYF IEF}  
 KB 17F CASSANDRA 121L {DLF IEF}  
 S&S ROCK SOLID 3L  
 TH 605F 57G KELSEY 62N  
 MOHICAN TRM JAVA 25J  
 MOHICAN LIZA 44F  
 ANHINGA VIC 69R 579  
 BOYD KEEPSAKE 944Y

**EPDs** CE: 10.3 BW: -0.3 WW: 43.4 YW: 67.2 M: 19.0 TM: 40.7

- She ranks in the top 5% of the breed for calving ease and birth weight
- A proven hard working brood matron
- Two daughters sell – RVP 4R Deluxe Edition 23D as Lot 7 and RVP 4040 Gift 54G as Lot 12
- A daughter, RVP Z400 Keepsake 36E, was selected by Blair-Athol Polled Herefords, Arcola, Saskatchewan
- Calved March 19, 2021. Bull calf RVP 138J, retained
- Pasture exposed to Haroldson's SCC Hawk ET 208E from June 5 to August 31, 2021. Vet checked safe in calf to Haroldson's SCC Hawk ET 208E.

**REFERENCE SIRE...**  
**BOYD FT KNOX 17Y XZ5 4040**

- Ranks in the top 4% of the breed for calving ease and the top 8% for birth weight
- His service and daughters sell



**SELLING CHOICE - LOTS 46A & 46B**



- Birth weight: 69 lbs.  
Weaning weight: 710 lbs.  
Yearling weight: 1045 lbs.
- She ranks in the top 10% of the breed for calving ease, birth weight and weaning weight, the top 15% for yearling weight and rib-eye and the top 18% for total maternal
- An abundance of barrel and top on this Frontier daughter with great data
- AI bred to NJW 160B 028X Historic 81E ET on April 16, 2021 then pasture exposed to RVPH 73S 34F Settler 159H ET from June 12 to August 31, 2021. Pregnancy examined safe to the AI service

**46A RVP 174E HALEY MILES 70H**

**46A** POLLED RVP 70H January 20, 2020 FEMALE PC03070468  
 TH 89T 755T STOCKMAN 475Z  
 TH 71U 17Y RITA 403A  
 NJW 73S M326 TRUST 100W ET {DLF HYF IEF}  
 FTF BOOM AND BLOOM 8211U  
 CRR 5280  
 C 88X NOTICE ME 1311 ET  
 NJW 73S W18 HOMEGROWN 8Y ET {DLF HYF IEF MDC}  
 BF 321 COUNTESS 5195

**EPDs** CE: 8.4 BW: 0.8 WW: 63.4 YW: 100.6 M: 27.8 TM: 59.5

**46B RVP 174E HONEY 48H**

**46B** POLLED RVP 48H January 13, 2020 FEMALE PC03070466  
 TH 89T 755T STOCKMAN 475Z  
 TH 71U 17Y RITA 403A  
 NJW 73S M326 TRUST 100W ET {DLF HYF IEF}  
 FTF BOOM AND BLOOM 8211U  
 SHF WONDER M326 W18 ET {DLF HYF IEF MDC}  
 NJW P606 72N DAYDREAM 73S {DLF HYF IEF}  
 NJW 120J BOULDER 28P ET  
 WJG BOOMER GAL 17H

**EPDs** CE: 7.0 BW: 1.8 WW: 55.7 YW: 107.2 M: 28.6 TM: 56.5



- Birth weight: 85 lbs.  
Weaning weight: 625 lbs.  
Yearling weight: 1121 lbs.
- She ranks in the top 8% of the breed for yearling weight and the top 18% for calving ease
- Long spined, thick topped, high-performance female
- AI bred to NJW 160B 028X Historic 81E ET on April 6, 2021 then pasture exposed to RVPH 73S 34F Settler 159H ET from June 12 to August 31, 2021. Pregnancy examined safe to the AI service

- Birth weight: 68 lbs.  
Weaning weight: 583 lbs.  
Yearling weight: 905 lbs.
- She ranks in the top 5% of the breed for birth weight and the top 8% for calving ease
- A maternal sister by Haroldson's SCC Hawk ET 208E is working at Elm-Lodge Polled Herefords, Indian River, Ontario
- Red eyed, short marked with a batting helmet patch, she will not be hard to find
- Pasture exposed to RVP 4040 Guarantee 49G from June 25 to August 31, 2021. Pregnancy examined safe 23 days on July 19, 2021



LOT  
47

**47 RVP 46A HELOISE 125H**  
POLLED RVP 125H

February 26, 2020

FEMALE  
PC03069878

BOYD WORLDWIDE 9050 ET {DLF HYF IEF MDF}  
**RVP 9050 ARCHITECT 46A {DLF HYF IEF}**  
PC02981745 RVP RCY 100W Y&E HAW 130Y {DLF HYF IEF}

SHF RIB EYE M326 R117 {DLF HYF IEF}  
MSU TCF RACHAEL 22S ET  
NJW 73S M326 TRUST 100W ET {DLF HYF IEF}  
RVP 36N TOUCH OF GOLD ET 10T {DLF HYF IEF}

RVP 100W DUKE 31D {DLF HYF IEF MSUDF}  
**GOBLE MISS GORGEOUS 206F**  
PC03054679 TRENT-HILL MYRA 1Z

NJW 73S M326 TRUST 100W ET {DLF HYF IEF}  
SRF AFFECTION 138A  
KJ 2403 RECRUIT 966R  
TRENT-HILL WYNIFRED 11W

**EPDs CE: 7.8 BW: -0.2 WW: 50.4 YW: 77.4 M: 27.3 TM: 52.5**

**48 RVP 70A HAVEN 150H**  
POLLED RVP 150H

April 5, 2020

FEMALE  
PC03069891

NJW 73S M326 TRUST 100W ET {DLF HYF IEF}  
**RVP 100W AUTHORITY ET 70A {DLF HYF IEF}**  
PC02989055 RED HILLS MS EMBRACE 8006 L3

NJW 73S W18 HOMETOWN 10Y ET {DLF HYF IEF MDC}  
**BIRD'S-HILL DUTCHIE 3C {DLF HYF IEF MSUDF MDC}**  
PC03006622 MHPH MS 533P DUCHESS ET 124W {DLF HYF IEF}

KCF BENNETT 3008 M326 {DLF HYF IEF MDF}  
NJW P606 72N DAYDREAM 73S {DLF HYF IEF}  
H 8E EMBRACER 8006  
LCC VICKI 84R Z155 C250

SHF WONDER M326 W18 ET {DLF HYF IEF MDC}  
NJW P606 72N DAYDREAM 73S {DLF HYF IEF}  
STAR BRIGHT FUTURE 533P ET  
STAR MISS AMERICA 12P {DLF HYF IEF}

**EPDs CE: -1.9 BW: 5.1 WW: 65.4 YW: 104.0 M: 28.3 TM: 61.0**

- Birth weight: 94 lbs.  
Weaning weight: 645 lbs.  
Yearling weight: 961 lbs.
- She ranks in the top 4% of the breed for cow weight the top 6% for weaning weight, the top 9% for yearling weight, fat, carcass weight and rib-eye and the top 15% for total maternal
- Check out the age of this heifer, she could be the "sleeper" of the heifer offering — totally complete!
- A performance daughter of Authority loaded with high carcass values
- AI bred to NJW 160B 028X Historic 81E ET on May 13, 2021, then exposed to RVP 4040 Guarantee 49G from June 25 to August 31, 2021 Pregnancy examined safe to RVP 4040 Guarantee 49G



LOT  
48

# HAPPY GO LUCKY & HANKY-PANKY...



- Birth weight: 76 lbs.  
Weaning weight: 720 lbs.  
Yearling weight: 1022 lbs.
- She ranks in the top 18% of the breed for birth weight and the top 20% for weaning weight
- Red eyed, short marked with plenty of depth and quality
- One can never have too many Architect daughters
- Pasture exposed to NJW 76S 311F Ridge 273H from May 30 to June 24, 2021

**49** **RVP 46A HAPPY GO LUCKY 31H** **FEMALE**  
 POLLED RVP 31H January 9, 2020 PC03069835

BOYD WORLDWIDE 9050 ET {DLF HYF IEF MDF}  
**RVP 9050 ARCHITECT 46A {DLF HYF IEF}**  
**PC02981745** RVP RCY 100W YE HAW 130Y {DLF HYF IEF}

TDP CROSSOVER Z400  
**RVP Z400 FANCIFUL 34F**  
**PC03045591** TABOO 4R BONNY 114B {DLF HYF IEF}

SHF RIB EYE M326 R117 {DLF HYF IEF}  
 MSU TCF RACHAEL 22S ET  
 NJW 73S M326 TRUST 100W ET {DLF HYF IEF}  
 RVP 36N TOUCH OF GOLD ET 10T {DLF HYF IEF}

TH 133U 719T UPGRADE 69X {DLF HYF IEF}  
 ASH LIL PEANUT 203P {DLF HYF IEF}  
 MSU TCF REVOLUTION 4R {DLF HYF IEF}  
 TABOO 122L YOANNA 111Y {DLF HYF IEF}

**EPDs** CE: 5.1 BW: 1.3 WW: 60.0 YW: 93.6 M: 25.7 TM: 55.7

**50** **RVP 4040 HANKY-PANKY 7H** **FEMALE**  
 POLLED RVP 7H January 4, 2020 PC03069827

TH 22R 16S LAMBEAU 17Y  
**BOYD FT KNOX 17Y XZ5 4040**  
**PC03045770** DOSS MY EYES ADORE U DHZ5

BOYD MASTERPIECE 0220  
**RVP 0220 CINNAMON 38C**  
**PC03006414** RVP RCY 100W YE HAW 130Y {DLF HYF IEF}

TH 121L 63N TUNDRA 16S  
 TH 62N 3L KELSEY 22R  
 BOYD WORLDWIDE 9050 ET {DLF HYF IEF MDF}  
 DHF COVER GIRL C902

SHF RIB EYE M326 R117 {DLF HYF IEF}  
 SSF P606 MS VICTOR 803  
 NJW 73S M326 TRUST 100W ET {DLF HYF IEF}  
 RVP 36N TOUCH OF GOLD ET 10T {DLF HYF IEF}

**EPDs** CE: 6.7 BW: 0.6 WW: 58.2 YW: 87.5 M: 22.6 TM: 51.7



- Birth weight: 74 lbs.  
Weaning weight: 760 lbs.  
Yearling weight: 1121 lbs.
- She ranks in the top 10% of the breed for birth weight and the top 18% for calving ease
- An attractive FT Knox daughter going back to "Touch of Gold"; has a great spread from birth to yearling weight
- Pasture exposed to NJW 76S 311F Ridge 273H from May 30 to June 24, 2021

**51****RVP 100W HANDS UP 93H**

POLLED

RVP 93H

February 3, 2020

**FEMALE**

PC03069857

KCF BENNETT 3008 M326 {DLF HYF IEF MDF}  
**NJW 73S M326 TRUST 100W ET {DLF HYF IEF}**  
**PC02938213** NJW P606 72N DAYDREAM 73S {DLF HYF IEF}

NJW 76S P20 BEEF 38W ET  
**JLCS 38W JAZZY 463 E24**  
**PC03043712** G JAZZY 719T 463

RRH MR FELT 3008  
 KCF MISS 459 F284  
 PW VICTOR BOOMER P606 {MDF}  
 NJW 94J DEW 72N {DLF HYF IEF}  
 SHF PROGRESS P20  
 NJW 55N STARDUST 76S  
 TH 122 711 VICTOR 719T {DLF HYF IEF MDF}  
 G MISS INTIME 247

- Birth weight: 85 lbs. Weaning weight: 670 lbs. Yearling weight: 1035 lbs.
- She ranks in the top 2% of the breed for fat, the top 8% for milk and the top 10% for total maternal and rib-eye
- Short marked, pigmented, correct and angular- after seeing the Trust's in production, you know the value of females with this quality
- Her mother, JLCS 38W Jazzy 463 E24, sells as Lot 5
- **AI bred to NJW 160B 028X Historic 81E ET on April 6, 2021, then exposed to NJW 76S 311F Ridge 273H from May 30 to June 24, 2021 Pregnancy examined safe to the AI service**

**EPDs** CE: 0.7 BW: 3.1 WW: 59.2 YW: 97.2 M: 33.2 TM: 62.8

## Junior's Incentive Draw

**How to enter:**

Register online at [www.rivervalleyherefords.com](http://www.rivervalleyherefords.com) until 3:00 pm sale day. If you are attending in person, you can register at the sale until 5:30 pm.

**What you can win:**

First winner receives a \$500.00 sale credit  
 Second winner receives a \$250.00 sale credit  
 Winners will be announced at the start of the sale.

**May only register ONCE. Sale credit must be used at this year's sale.**

We encourage you to register early for your chance to win.

## SERVICE SIRES...



NJW 79Z 199B Cowboss 113H ET - Service Sire

**A** **NJW 79Z 199B COWBOSS 113H ET {DLF, HYF, IEF, MSUDF, MDF}** **MALE**  
 POLLED 79Z113H February 13, 2020 P44169828

NJW 98S R117 RIBEYE 88X ET {SOD, CHB, DLF, HYF, IEF, MSUDF, MDF}  
**NJW 78P 88X COWBOSS 199B ET {DLF, HYF, IEF, MDF}**  
**P43483216** NJW BW LADYSPORT DEW 78P ET {DLF, HYF, IEF}

NJW 73S M326 TRUST 100W ET {SOD, CHB, DLF, HYF, IEF, MSUDF, MDF}  
**BW 91H 100W RITA 79Z ET {DLF, HYF, IEF, MSUDF, MDF}**  
**P43311375** REMITALL RITA 91H {DLF, HYF, IEF}

SHF RIB EYE M326 R117 {CHB, SOD, DLF, HYF, IEF}  
 NJW 9126J DEW DOMINO 98S {DOD, DLF, HYF, IEF}  
 RU 20X BOULDER 57G {SOD}  
 SADDLE VLY LADYSPORT 120

KCF BENNETT 3008 M326 {CHB, SOD, DLF, HYF, IEF, MDF}  
 NJW P606 72N DAYDREAM 73S {DLF, HYF, IEF, MSUDF, MDF}  
 FELTONS 517 {SOD, DLF, HYF, IEF, MSUDF}  
 REMITALL FLORIAL RITA 102F

**EPDs** CE: 4.0 BW: 2.8 WW: 58 YW: 96 M: 39 TM: 68

- Ranks in the top 1% of the breed for milk, the top 2% for total maternal, the top 12% for rib-eye and the top 20% for yearling weight
- His service sells



RVPH 79Z 33B Whit 83H ET - Service Sire

**B** **RVPH 79Z 33B WHIT 83H ET** **MALE**  
 POLLED 83H79Z February 9, 2020 PC03079602

LJR 023R WHITMORE 10W {MDF}  
**NJW 160Z 10W WHIT 33B {MDF}**  
**PA43483059** NJW 73S 88X DAYDREAM 160Z

NJW 73S M326 TRUST 100W ET {DLF, HYF, IEF}  
**BW 91H 100W RITA 79Z ET**  
**PA43311375** REMITALL RITA 91H

KJ C&L J119 LOGIC 023R ET  
 LJR MICKEY 278N  
 NJW 98S R117 RIBEYE 88X ET {MDF}  
 NJW P606 72N DAYDREAM 73S {DLF, HYF, IEF}

KCF BENNETT 3008 M326 {DLF, HYF, IEF, MDF}  
 NJW P606 72N DAYDREAM 73S {DLF, HYF, IEF}  
 FELTONS 517  
 REMITALL FLORIAL RITA 102F

**EPDs** CE: 5.6 BW: 3.3 WW: 61.9 YW: 108.9 M: 31.9 TM: 62.9

- Ranks in the top 5% of the breed for yearling weight, the top 8% for total maternal, the top 10% for milk, the top 1% for weaning weight and cow weight and the top 20% for rib-eye
- He is a double bred "Daydream 73S"
- His service sells



NJW 160B 028X Historic 81E ET - Service Sire

**C** **NJW 160B 028X HISTORIC 81E ET {MDF}** **MALE**  
 POLLED 160B 81E February 9, 2017 PC03072832

UPS DOMINO 3027 {DLF, HYF, IEF}  
**CHURCHILL SENSATION 028X {DLF, HYF, IEF}**  
**C02977432** CHURCHILL LADY 7202T ET {DLF, HYF, IEF}

NJW 76S P20 BEEF 38W ET  
**NJW 73S 38W DAYDREAM 160B**  
**PA43483177** NJW P606 72N DAYDREAM 73S {DLF, HYF, IEF}

CL 1 DOMINO 9126J 1ET  
 UPS MISS DIAMOND 1353  
 GH RAMBO 279R  
 CL 1 DOMINETTE 301N

SHF PROGRESS P20  
 NJW 55N STARDUST 76S  
 PW VICTOR BOOMER P606 {MDF}  
 NJW 94J DEW 72N {DLF, HYF, IEF}

**EPDs** CE: 7.5 BW: -0.5 WW: 51.6 YW: 79.6 M: 39.3 TM: 65.1

- Ranks in the top 1% of the breed for weaning weight and cow weight, the top 4% for yearling weight, total maternal and carcass weight, the top 5% for calving ease, the top 18% for rib-eye and the top 20% for birth weight
- Outstanding individual with amazing data to back him up
- His service sells

**D INNISFAIL WHR X651/723 4013 ET {MDF}** **MALE**  
 POLLED IF 4013 September 10, 2014 PC03054441

EFBEEF FOREMOST U208 {DLF HYF IEF} FELTONS SOUNDER 957  
 EFBEEF TFL U208 TESTED X651 ET EFBEEF G824 KATE S610 ET  
**PA43091736** EFBEEF P606 MABEL R415 EF SCHU-LAR N106 OF 009K 434V  
 EF G824 MABEL N174

EF F745 FRANK P230 {DLF HYF IEF} FELTONS ENDURANCE 745  
**INNISFAIL P230 T723** FELTONS KATE P38  
**PA42843247** INNISFAIL 235 R501 ET FELTONS LEXUS 235  
 FELTONS KATE P26

**EPDs CE: 0.6 BW: 3.9 WW: 80.1 YW: 127.8 M: 24.0 TM: 64.1**

- Ranks in the top 1% of the breed for weaning and yearling weight and marbling, the top 2% for carcass weight and the top 5% for total maternal
- A new exciting out-cross sire with amazing performance data
- His first service to sell in Canada



**Innisfail WHR X651/723 4013 ET - Service Sire**

**E NJW 76S 311F RIDGE 273H {DLF,HYF,IEF,MSUDF,MDF}** **MALE**  
 POLLED 76S273H March 26, 2020 P44170032

NJW 76S P20 BEEF 38W ET {SOD,CHB,DLF,HYF,IEF,MSUDF,MDF}  
 NJW 73S 38W RIDGE 103C ET {DLF,HYF,IEF,MSUDF,MDF} NJW P606 72N DAYDREAM 73S {DLF,HYF,IEF,MSUDF,MDF}  
**NJW 79Z 103C RIDGE 311F ET {CHB,DLF,HYF,IEF,MSUDF,MDF}** NJW 73S M326 TRUST 100W ET {SOD,CHB,DLF,HYF,IEF,MSUDF,MDF}  
**P43943481** BW 91H 100W RITA 79Z ET {DLF,HYF,IEF,MSUDF,MDF} REMITALL RITA 91H {DLF,HYF,IEF}

NJW BW TRAILDUST 161L {MDF} NJW 6Z WRANGLER 20E {HYF}  
**NJW 55N STARDUST 76S {DLF,HYF,IEF,MSUDF,MDF}** SADDLE VLY LADYSPORT 120  
**P42693945** NJW 57G SPIRIT QUEEN 55N ET {DLF,HYF,IEF} RU 20X BOULDER 57G {SOD}  
 GK SPIRIT QUEEN 42A

**EPDs CE: 10.9 BW: -0.2 WW: 47 YW: 82 M: 33 TM: 57**

- Ranks in the top 2% of the breed for rib-eye, the top 3% for maternal calving ease, the top 5% for birth weight and calving ease, the top 8% for milk and the top 20% for fat
- This youngster ran with the heifers this summer
- His service sells



**NJW 76S 311F Ridge 273H - Service Sire**

**F TH FRONTIER 174E {MDF}** **MALE**  
 POLLED 174E January 30, 2017 PC03065148

TH 89T 755T STOCKMAN 475Z TH 223 71I VICTOR 755T {DLF HYF IEF}  
**TH 403A 475Z PIONEER 358C ET** TH 16G 20N GEMINI 89T {DLF HYF IEF}  
**PC03042659** TH 71U 17Y RITA 403A TH 22R 16S LAMBEAU 17Y  
 TH 7N 45P RITA 71U {DLF HYF IEF}

NJW 73S M326 TRUST 100W ET {DLF HYF IEF} KCF BENNETT 3008 M326 {DLF HYF IEF MDF}  
**FTF TRUSTING LADY 312A** NJW P606 72N DAYDREAM 73S {DLF HYF IEF}  
**PA43383673** FTF BOOM AND BLOOM 8211U FTF BOOMER 29F 551R  
 FTF LEANNA 480P

**EPDs CE: 7.5 BW: 0.7 WW: 72.6 YW: 125.4 M: 28.1 TM: 64.4**

- Ranks in the top 1% of the breed for weaning, yearling and cow weight, the top 5% for total maternal, the top 10% for birth weight and rib-eye and the top 15% for calving ease
- His progeny and service sells



**TH Frontier 174E - Service Sire**

# Thurston Livestock

Ivor & Katrina Thurston | 243 Pine Grove Rd RR1 | Lanark ON K0G 1K0 | Phone: 613-324-4864 | Email: ivort88@gmail.com



**LOT  
52**

**52 TL 719T BETH 16H**  
 POLLED THUR 16H  
 January 28, 2020 FEMALE  
 PC03069685

DRF JWR PRINCE VICTOR 711  
**TH 122 711 VICTOR 719T {DLF HYF IEF MDF}**  
 PC02942339 KBCR 19D DOMINETTE 122 {DLF IEF}

HRP THM VICTOR 109W 9329  
 RHF 964 VICTRA 4057  
 NJW 1Y WRANGLER 19D {MDF}  
 KBCR DOMINETTE 9112

KCF BENNETT 3008 M326 {DLF HYF IEF MDF}  
 NJW P606 72N DAYDREAM 73S {DLF HYF IEF}  
 HF 4L BEYOND 36N  
 WLB 035J FLORA 13L

**EPDs CE: -1.0 BW: 4.7 WW: 62.8 YW: 102.0 M: 29.1 TM: 60.5**

- Birth weight: 92 lbs.
- She ranks in the top 8% of the breed for fat, the top 10% for yearling weight, the top 15% for weaning weight and the top 18% for total maternal
- This heifer just keeps getting better as she matures, with a refined bone structure and a really nice udder starting to develop. Her maternal grand dam was Grand Champion at the 2012 World Hereford Conference, and her sire is a breed leader.
- Pasture exposed to Manns Marksman 20F 20H from May 7 to July 4, 2021. Pregnancy examined safe in calf



**Manns Marksman 20F 20H - Service Sire**



**WLB 36N Beth ET 452S - Maternal Granddam of Lot 52**





Bradley Ms Candy 102C - Dam of Lot 53



Harvie OVHF Empower ET 5F - Sire of Lot 53

- Birth weight: 104 lbs.
- She ranks in the top 4% of the breed for weaning weight, the top 5% for yearling weight and cow weight, the top 6% for carcass weight and the top 8% for rib-eye
- As her name says, we believe this one could easily be taken to town, and it could be quite a ride! Empower calves sold extremely well at the Harvie Ranching dispersal last year. 1J's dam is a complete, well-balanced cow and this heifer is following in her footsteps, with good bone and massive rib shape.
- We would like to retain one flush opportunity for ourselves at a later date.



LOT  
53

**53 TL 5F JOYRIDE 1J**  
POLLED THUR 1J

R LEADER 6964  
**HARVIE OVHF EMPOWER ET 5F {DLF HYF IEF MSUDF MDF}**  
**PC03050477** NEXT GEN RIESLING 295 ET

TRIARA UNLEASHED 893U  
**BRADLEY MS CANDY 102C**  
**PC03004962** BRADLEY MS ZELDA 118Z {DLF HYF IEF}

**EPDs** CE: -3.4 BW: 6.2 WW: 70.0 YW: 110.1 M: 20.3 TM: 55.3

January 1, 2021 FEMALE  
PC03082233  
HYALITE ON TARGET 936  
R MISS REVOLUTION 1009  
H/TSR/CHEZ/FULL THROTTLE ET  
STAR SPIRIDGE KESSEY 321L ET {DLF HYF IEF}  
CCR 57G STAMINA ET 199S {DLF HYF IEF}  
JOYCLIFF RUBY JANE 129M  
SHF RIB EYE M326 R117 {DLF HYF IEF}  
BRADLEY MS NIKKI 112N {DLF HYF IEF}

**54 TL 8Y JOLENE 2J**  
POLLED THUR 2J

SHF WONDER M326 W18 ET {DLF HYF IEF MDC}  
**NJW 73S W18 HOMEGROWN 8Y ET {DLF HYF IEF MDC}**  
**PC02987563** NJW P606 72N DAYDREAM 73S {DLF HYF IEF}

MSU TCF REVOLUTION 4R {DLF HYF IEF}  
**RVP 4R ELABORATE 31E**  
**PC03032002** RVP 122L BRILLIANT 22B {DLF HYF IEF MSUDF}

**PE EPDs** CE: 2.8 BW: 3.6 WW: 55.6 YW: 92.6 M: 30.9 TM: 58.8

January 2, 2021 FEMALE  
PC03084516  
KCF BENNETT 3008 M326 {DLF HYF IEF MDF}  
SHF GOVERNESS 236G L37  
PW VICTOR BOOMER P606 {MDF}  
NJW 94J DEW 72N {DLF HYF IEF}  
FELTONS LEGEND 242  
MSU TCF RACHAEL ET 54N {DLF HYF IEF}  
REMITALL ONLINE 122L  
MC P316 JEWEL W9118 ET



RVP 4R Elaborate 31E - Dam of Lot 54

- Birth weight: 82 lbs.
- This calf exhibits many good qualities, including nice neck extension and depth of rib. She will only get better with time. Lots of pedigree here.



LOT  
54



# Thank You to all of our Genetic Designs XVI Buyers

FRANK DEJONG - Brockville, ON  
JOE KING - Englehart, ON  
TRI-ROSS HEREFORDS - Uxbridge, ON  
DOUBLE H CATTLE CO. - McNab/Braeside, ON  
HIGH RIDGE FARM - Melbourne, QC  
CLAUDE ET ANDRE BEAUMONT - Ste-Catherine-De-La-J-Cartier, QC  
CRYSTAL BROOKE FARM - Danville, QC  
ARTHUR POLLED HEREFORDS - Alida, SK  
GOLD WING RANCH - Deseronto, ON  
TED RUSSELL - Orillia, ON  
THURSTON LIVSTOCK - Carlton Place, ON  
ALORA FARMS - Odessa, ON  
BLUE MILLS CATTLE CO. - Precott, ON  
CARL LABBE - Saint-Cyrille-De-Wendover, QC  
BREEZY ACRES - Carp, ON  
MATT LEAHY - Lakefield, ON  
MEADOWVIEW FARM - Pembroke, ON  
STEELE BROOK FARM - Cleveland, QC  
WELLS FAMILY FARM - Jasper, ON  
DONALD BELLAMY - Shallow Lake, ON  
RWB HEREFORDS - Danville, QC  
CASEY VAN KESSEL - Thornton, ON  
ELMLODGE - Indian River, ON  
BLAIR-ATHOL - Arcola, SK  
ANL POLLED HEREFORDS - Steelman, SK  
J&L CATTLE CO. - Jeromesville, OH  
MOHICAN WEST - Laurel, MT  
MEDONTE HIGHLANDS - Mississauga, ON  
MCDONALD FARM - Grand Rapids, MI  
PHANTOM CREEK - Swift Current, SK  
MIKE GOODINE - Bear Island, NB  
ROBERT TRUTHWAITE - Hodgson, MB  
GREENRIDGE HEREFORDS - Fisher Branch, MB  
RAYMOND JOHNSTON - Leross, SK  
AXA FARMS - Hampton, NB  
OULTON'S FARM - Windsor, NS  
JERRY DOWNEY - Chatsworth, ON  
LEONARD ALLAN - Oxford, NS  
CRAIG DORMAN - Batavia, NY  
REMITALL WEST - Olds, AB  
LONE PINE CATTLE SERVICES - Vibank, SK  
MANN'S HEREFORDS - Austin, MB  
DALES HOMESTEAD FARMS - Cargill, ON  
RAWCLIFFE-GRANGE - Rosser, MB  
GRIEVES HEREFORDS - Lafayette, IN  
ROCK'N H HEREFORDS - Hamiota, MB  
SHELBY KNULL - Crossfield, AB

## Terms & Conditions

### Terms:

The terms of the sale are cash or cheque, payable at par at the sale location. The right of property shall not pass until after settlement has been made; no invoicing on buyers in attendance unless previous arrangements have been made. Every animal sells to the highest bidder and in cases of disputes, the auctioneer's decision will be final. Announcements from the auction block will take precedence over the printed matter in the catalogue. Current exchange rates will be announced sale day. All monies are in Canadian funds.

### Certificate Of Registration:

Each animal will carry papers issued by the Canadian Hereford Association unless otherwise stated. A certificate of registry duly transferred will be furnished to the buyer for each animal after payment has been made.

### Pedigree Estimates

Pedigree Estimates (PE) are created on the projected mating of the animal's sire and dam based on averages of the two, creating estimated values that do not hold the same accuracy of actual EPDs issued from the association and should be used as such.

### Health:

All animals in the sale have met all necessary health requirements.

### Guarantee:

Each animal becomes the purchaser's risk immediately after the animal is sold. All animals in this sale will be sold under the terms and guarantees set forth by the Canadian Hereford Association with regard to health, freedom from defects and from both reproductive and specific genetic unsoundness.

### Pregnancy Information:

All serviceable age females have been pregnancy examined by an accredited veterinarian, giving an estimated length of gestation. This estimated gestation period shall be used only as a guideline to calving and is not a guarantee of actual service.

### Liabilities:

All persons attend the sale at their own risk. The seller, facility owner and sale manager assume no liability legal or otherwise, for any accidents that occur. It is understood that T Bar C Cattle Co. (2013) Ltd. is acting only as a medium between buyer and seller and is not responsible for any failure on the part of either party to live up to his obligations. Neither does T Bar C Cattle Co. (2013) Ltd. assume any financial obligations to collect or enforce collection of any monies between parties and any legal action that may in exceptional cases be taken must be between the buyer and the seller. T Bar C Cattle Co. (2013) Ltd. assumes no responsibility for any credit extended by the seller to the buyer. The buyer must look to the seller for fulfillment of all guarantees and representations made hereunder.

### Delivery:

Will be provided at cost at the buyers option and risk. Instructions for delivery must be given at time of settlement. No cattle will be released until after the conclusion of the sale.

### Phone, Mail, Wire Bids:

Bidders unable to attend the sale may phone, wire or mail their bids and instructions to the sale manager, auctioneer or special representatives. Bids must be received in sufficient time prior to the sale.

### Insurance:

We strongly recommend that insurance is purchased for full value.

### Errors:

All announcements at sale time, written or oral, supersede any written material in the catalogue.

Return Undeliverable  
Canadian Addresses To:  
T Bar C Cattle Co. Ltd.  
Box 2330  
Warman, SK S0K 4S0



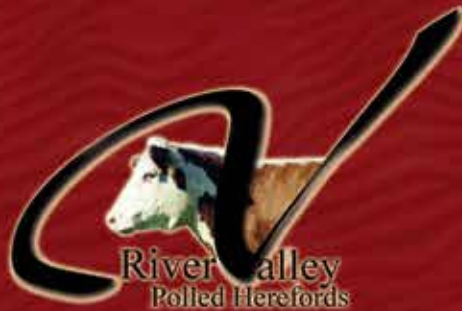
LOT  
**1**



LOT  
**2**



LOT  
**24**



LOT  
**8**



LOT  
**28**



LOT  
**45**

Created by  
*Today's*  
Publishing